

Supplementary Information S1: Summer and winter home range polygons of studied raptor species calculated as 95% MCP and 50% MCP.

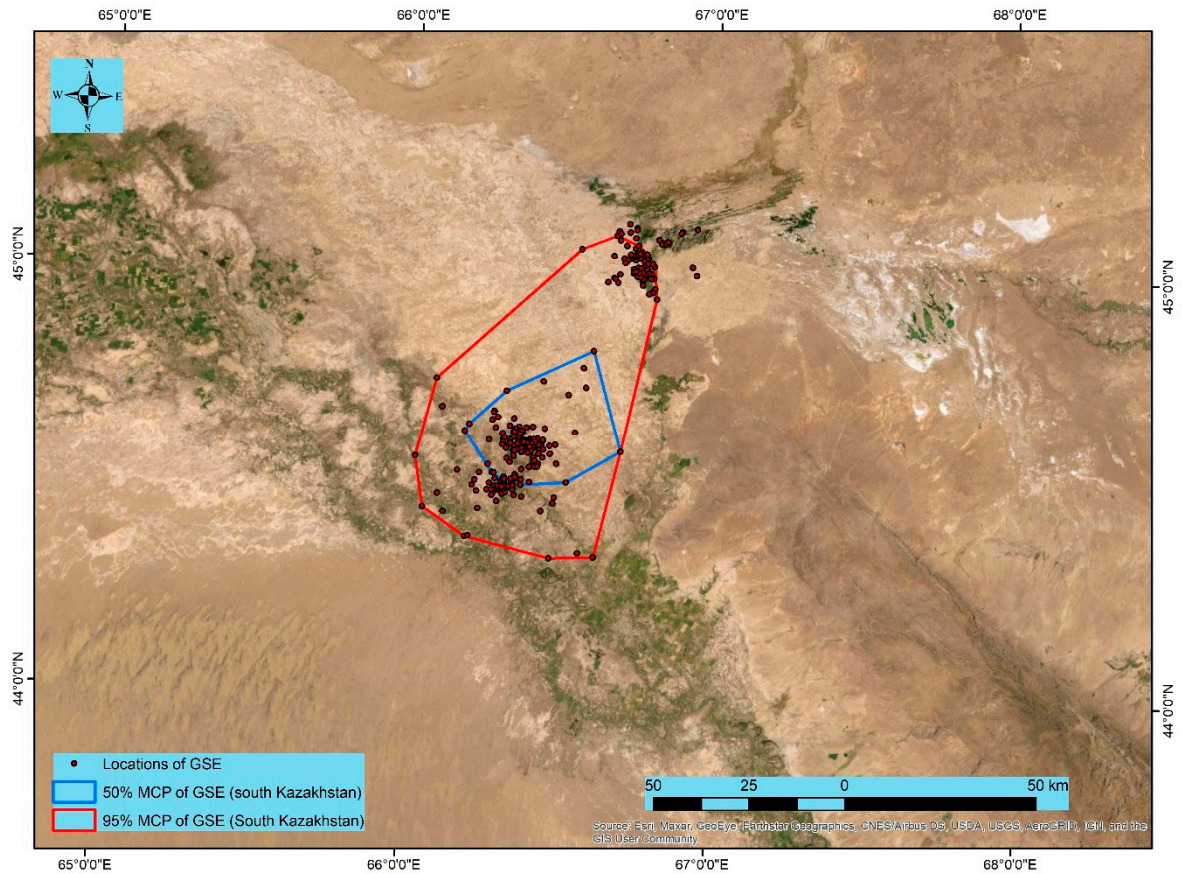


Figure S1 Summer home range polygon of Greater Spotted Eagle (GSE) calculated at 95% and 50% MCP in south Kazakhstan.

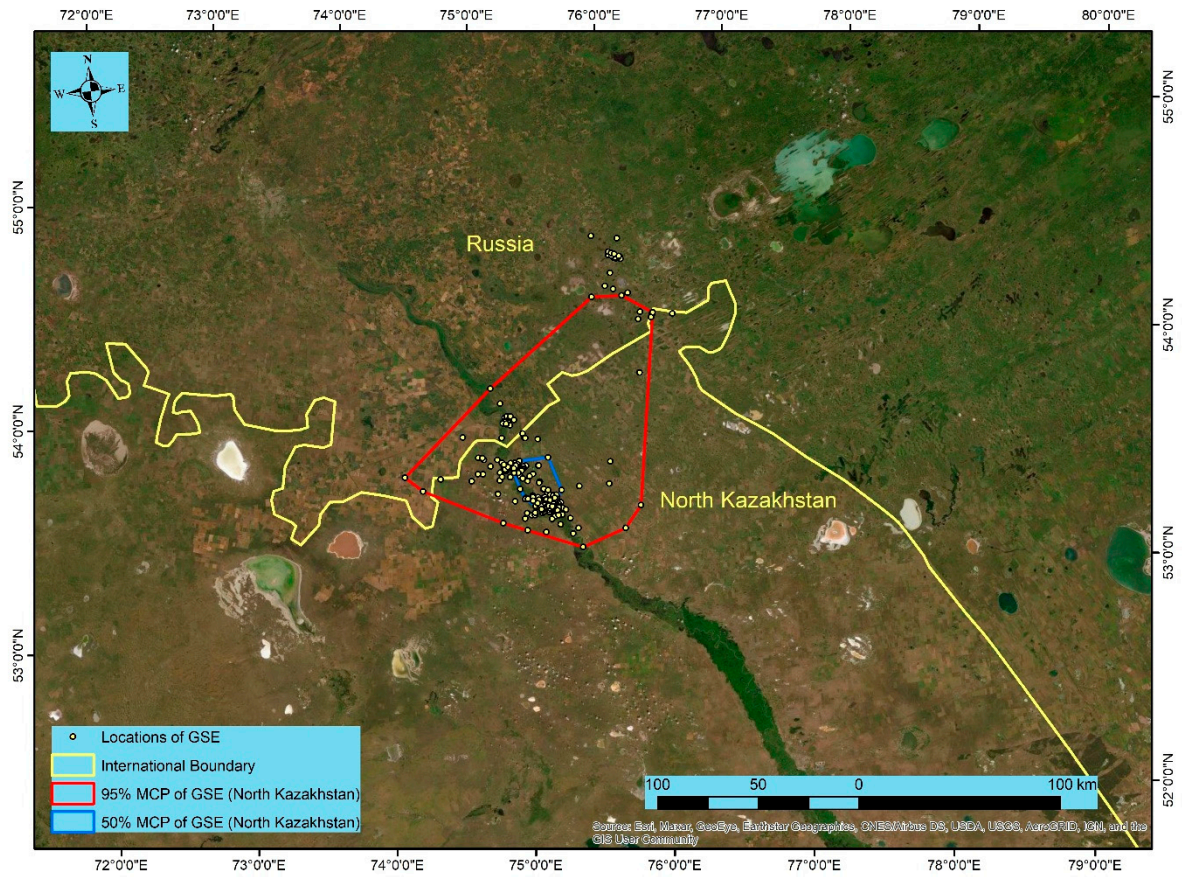


Figure S2 Summer home range polygon of Greater Spotted Eagle (GSE) calculated at 95% and 50% MCP in north Kazakhstan.

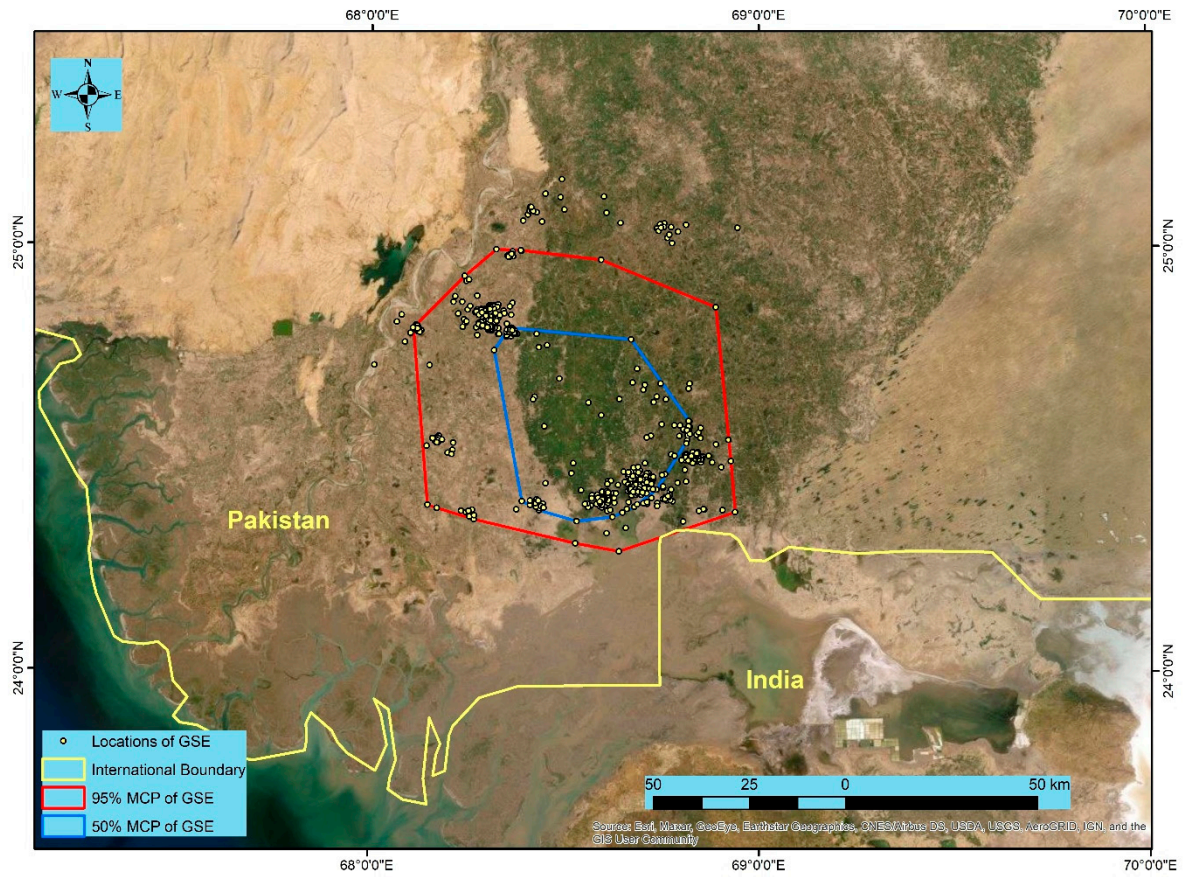


Figure S3 Summer home range polygon of Greater Spotted Eagle (GSE) calculated at 95% and 50% MCP in Pakistan.

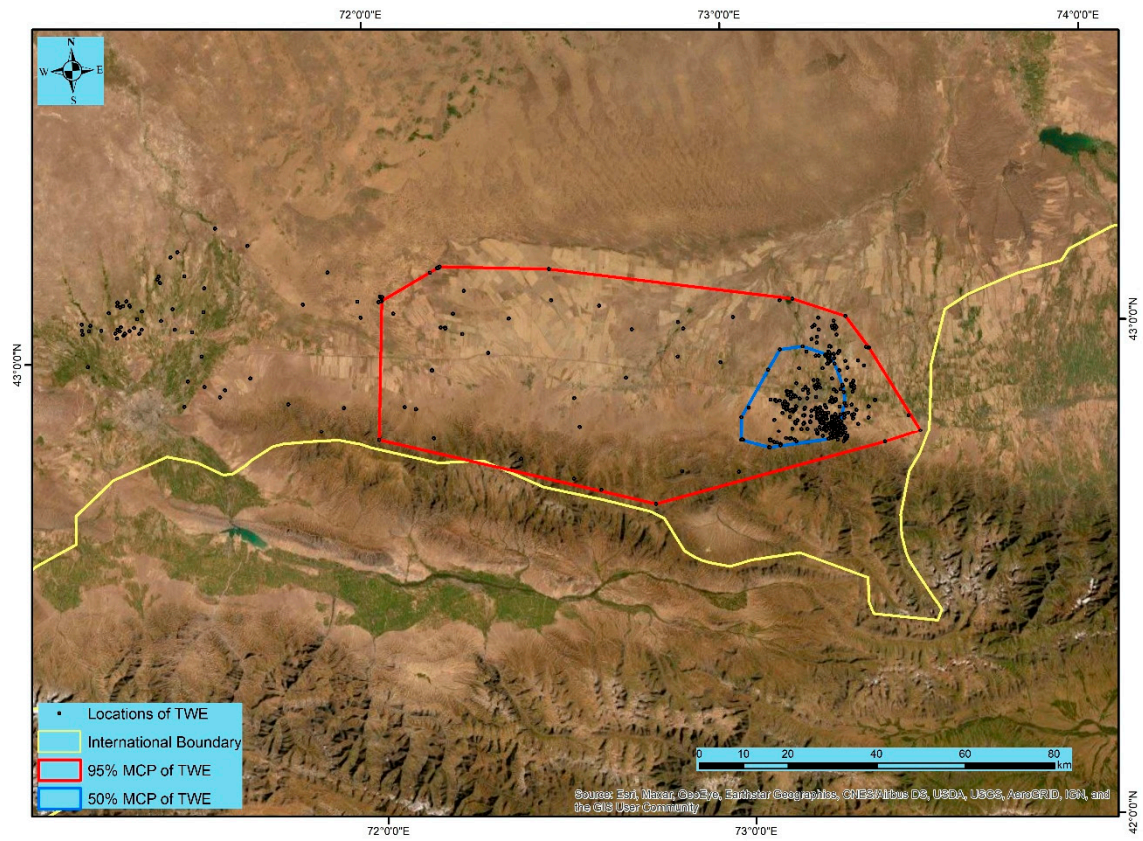


Figure S4 Summer home range polygon of Tawny Eagle (TWE) calculated at 95% and 50% MCP in Kazakhstan

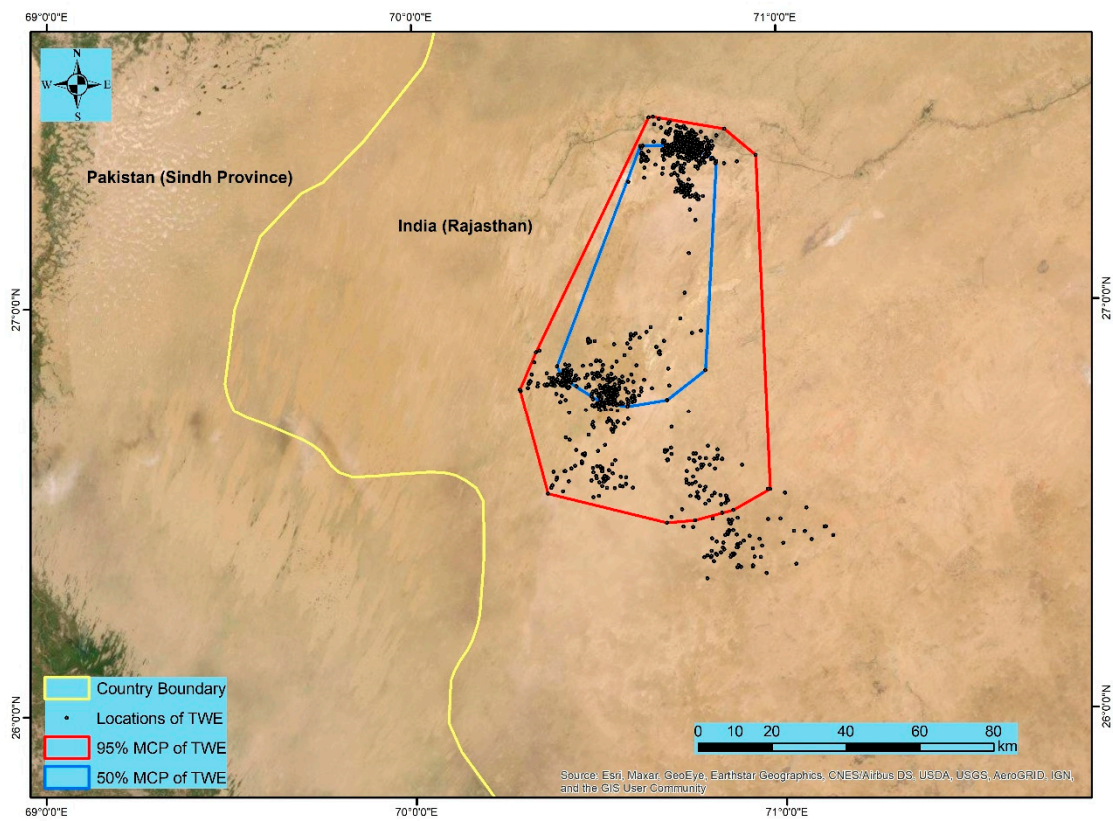


Figure S5 Home range polygon of Tawny Eagle (TWE) calculated at 95% and 50% MCP in Rajasthan, India.

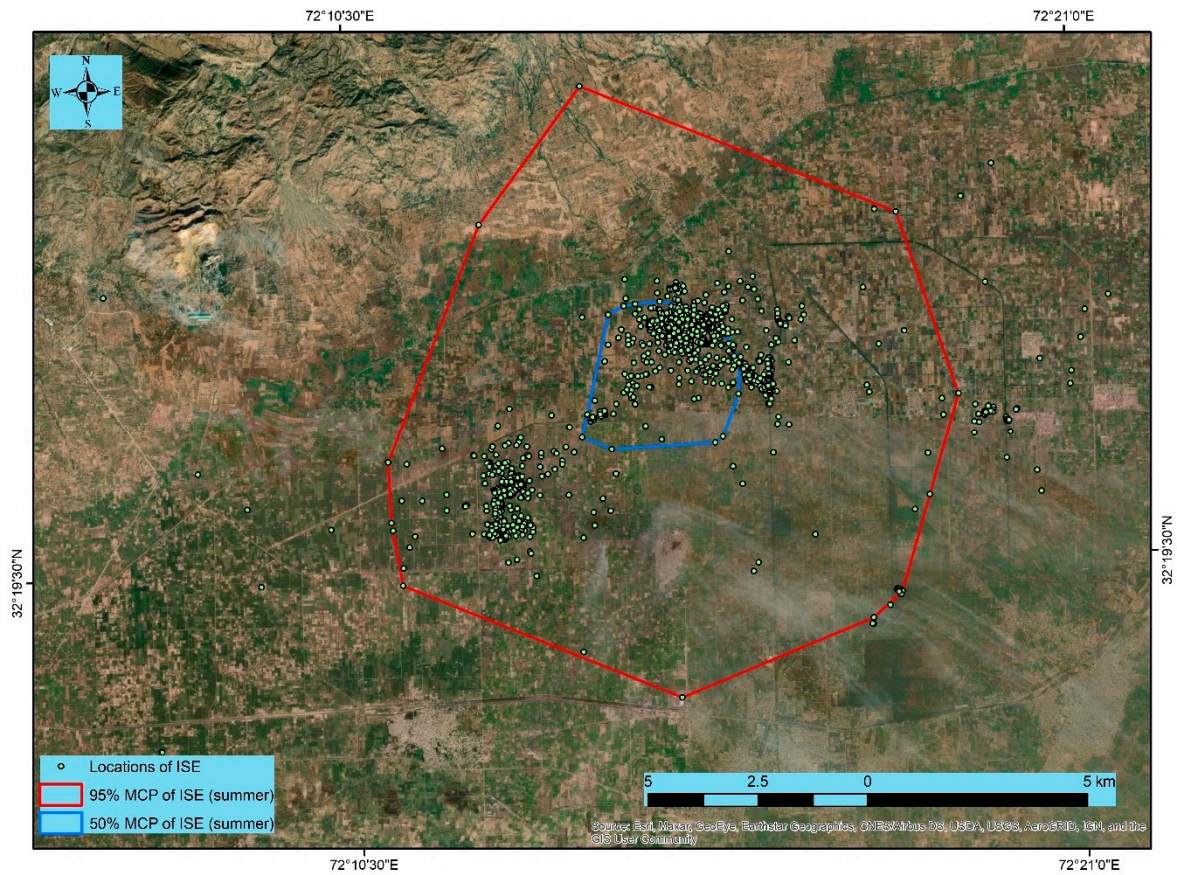


Figure S6 Summer home range polygon of Indian Spotted Eagle (ISE) calculated at 95% and 50% MCP in Pakistan.

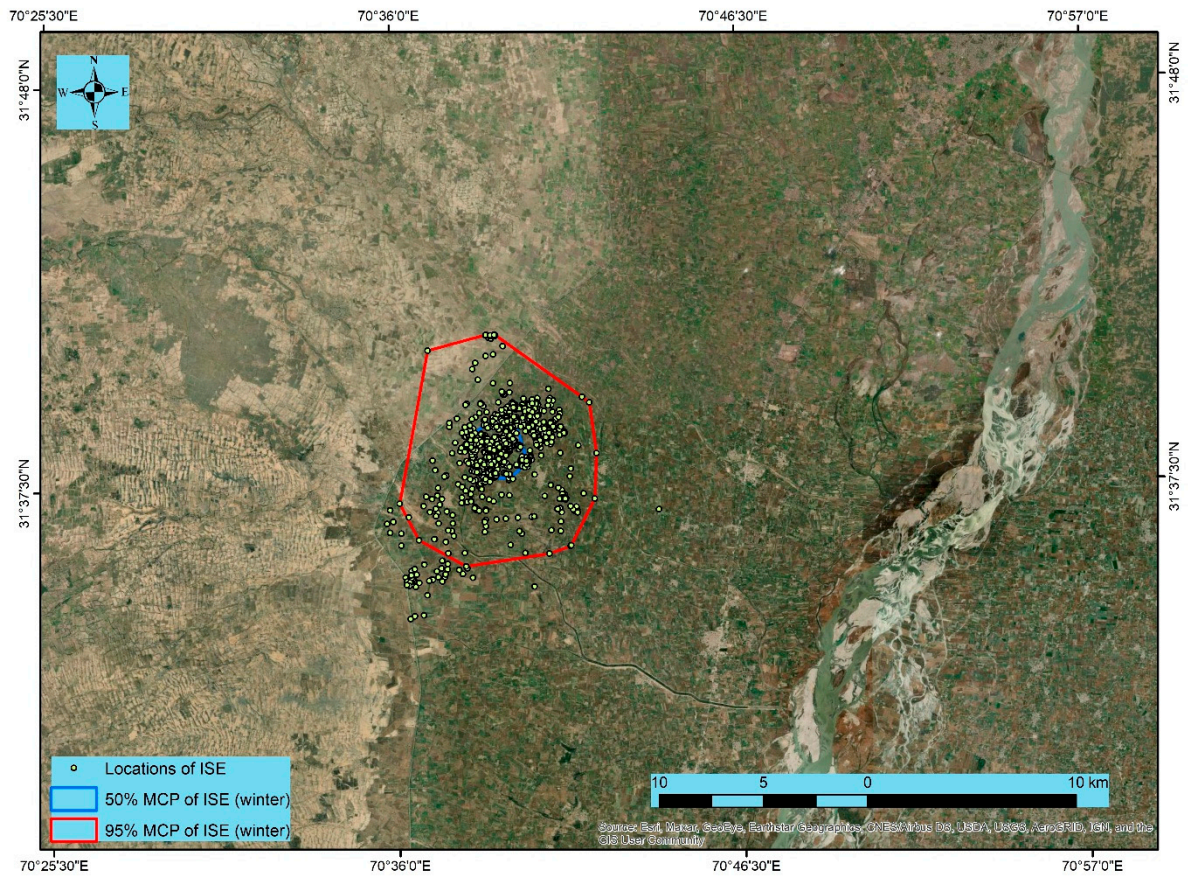


Figure S7 Winter home range polygon of Indian Spotted Eagle (ISE) calculated at 95% and 50% MCP in Pakistan.

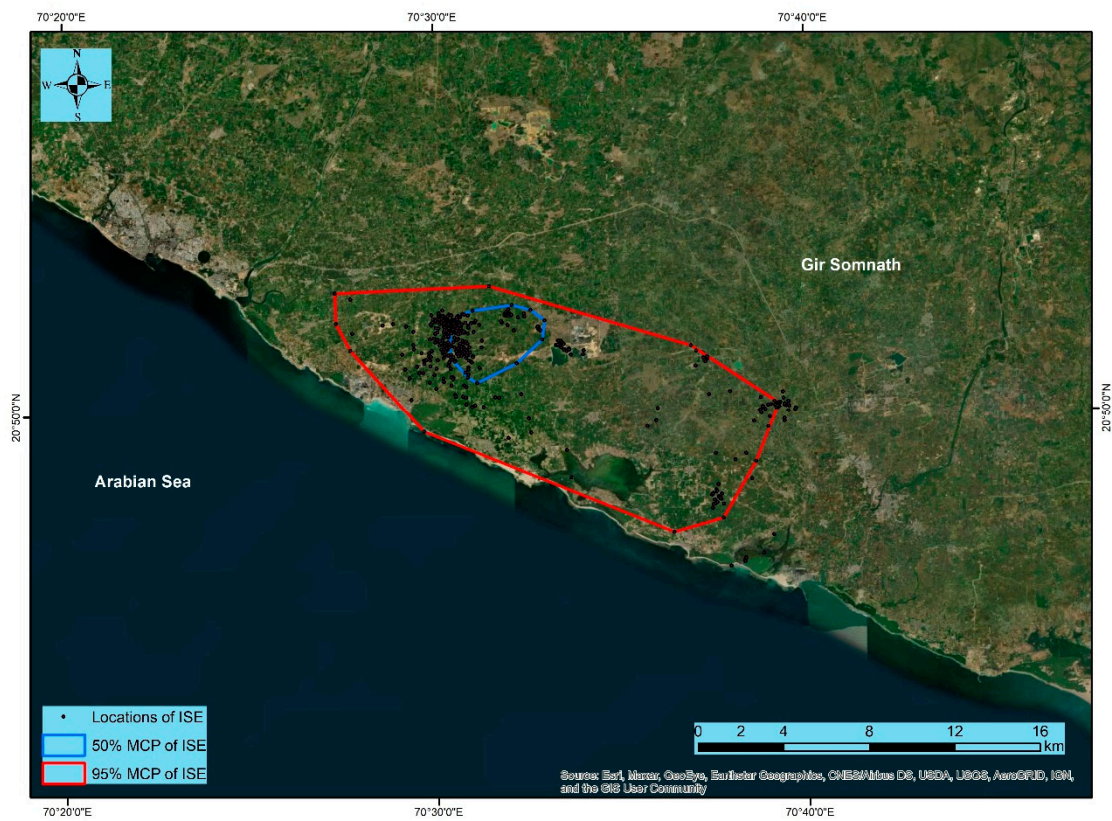


Figure S8 Home range polygon of Indian Spotted Eagle (ISE) calculated at 95% and 50% MCP for Gujarat, India during March 2021.



Figure S9 Winter home range polygon of Pallid Harrier (PHR) calculated at 95% and 50% MCP in India.

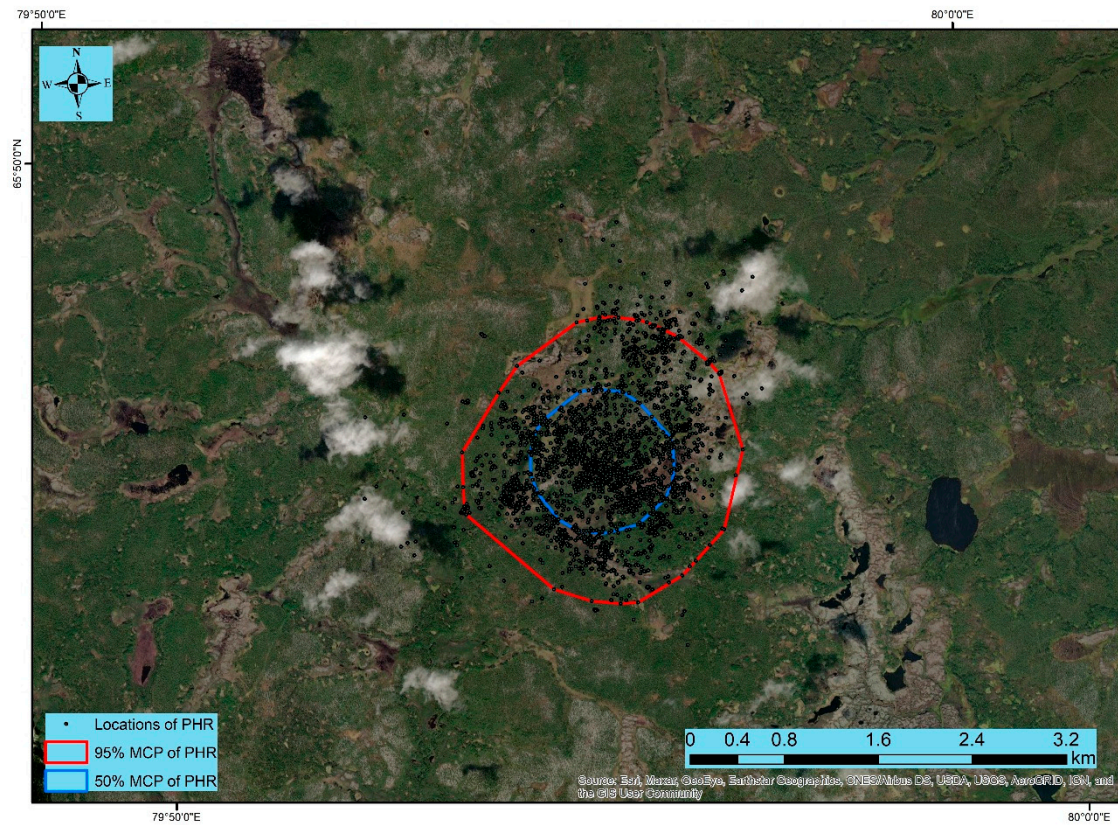


Figure S10 Winter home range polygon of Pallid Harrier (PHR) calculated at 95% and 50% MCP in Russia.