

## Supplementary materials for

### Slope classes in the Kunhar River basin

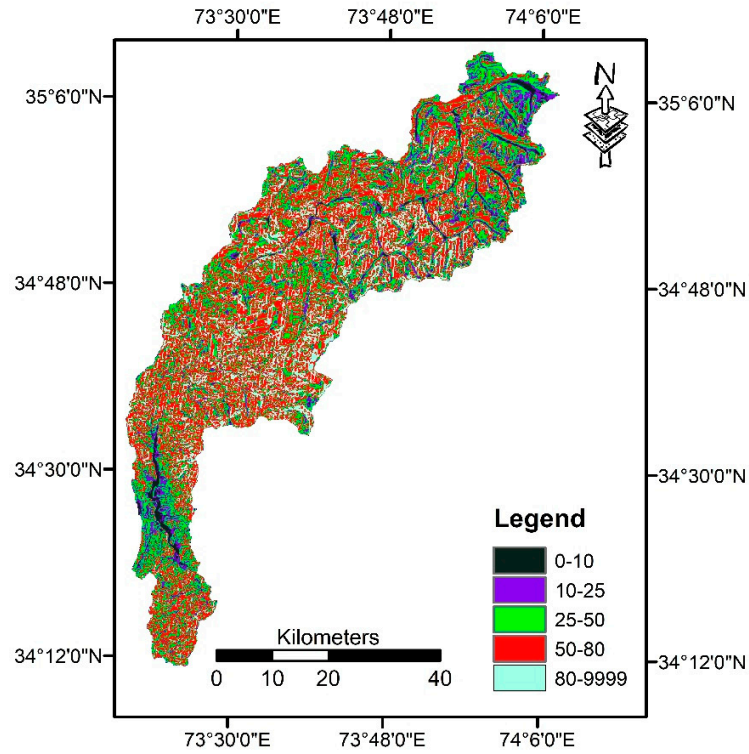


Figure S1. Slope classes map of the Kunhar River basin.

Table S1. Proportion of slope classes in the Kunhar River basin.

| Slope class | Area [ha] | Percentage of Watershed area |
|-------------|-----------|------------------------------|
| 0-10        | 7642.7    | 2.9                          |
| 10-25       | 27021.5   | 10.3                         |
| 25-50       | 82512.1   | 31.4                         |
| 50-80       | 109768.1  | 41.7                         |
| 80-9999     | 36254.0   | 13.8                         |

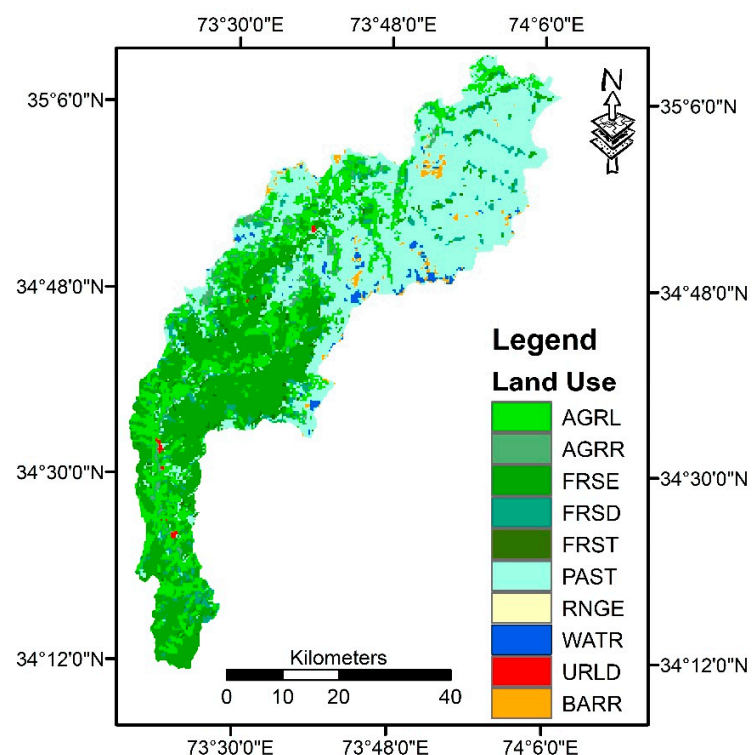


Figure S2. Land use map of the Kunhar River basin.

Table S2. Proportion of land use classes in the Kunhar River basin

| Land use class              | SWAT code | Area [ha] | Percentage of Watershed area |
|-----------------------------|-----------|-----------|------------------------------|
| Agricultural Land—Generic   | AGRL      | 49501.2   | 18.8                         |
| Agricultural Land—Row Crops | AGRR      | 8379.4    | 3.2                          |
| Forest—Evergreen            | FRSE      | 71819.8   | 27.3                         |
| Forest—Deciduous            | FRSD      | 12841.8   | 4.9                          |
| Forest—Mixed                | FRST      | 2010.3    | 0.8                          |
| Pasture                     | PAST      | 112395.6  | 42.7                         |
| Range—Grasses               | RNGE      | 59.8      | 0.0                          |
| Water                       | WATR      | 2973.1    | 1.1                          |
| Residential—Low Density     | URLD      | 458.3     | 0.2                          |
| Barren                      | BARR      | 2759.1    | 1.1                          |

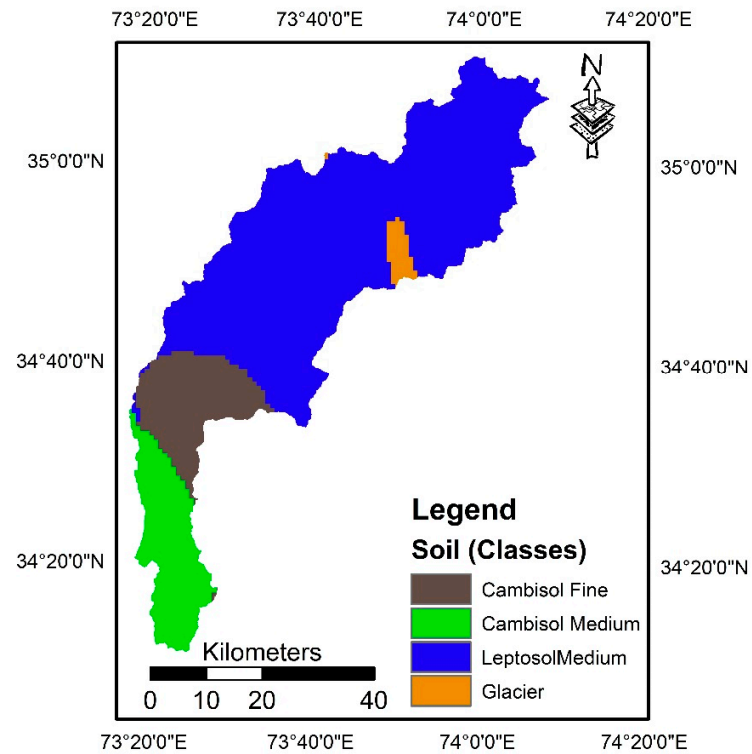


Figure S3. Soil classes map of the Kunhar River basin.

Table S3. Proportion of soil classes in the Kunhar River basin

| Soil Group | Texture | Area [ha] | Percentage of Watershed area |
|------------|---------|-----------|------------------------------|
| Cambisol   | Fine    | 33638.6   | 12.8                         |
| Cambisol   | Medium  | 33759.7   | 12.8                         |
| Leptosol   | Medium  | 191186.5  | 72.6                         |
| Glacier    | -       | 4613.6    | 1.8                          |