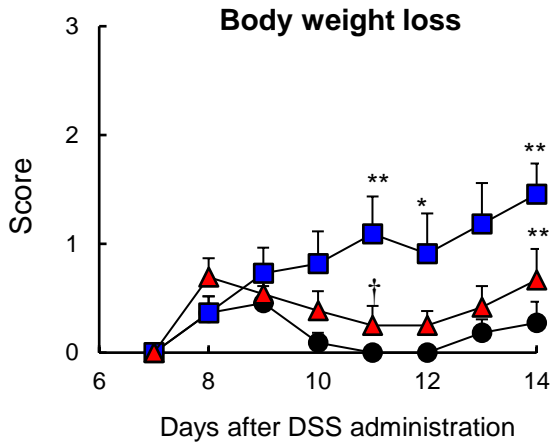
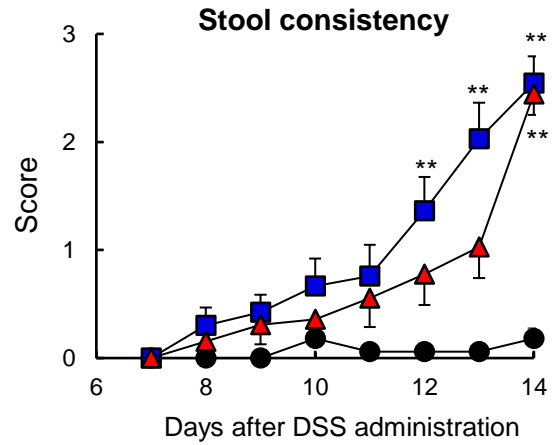


Figure S1. Time course of MV uptake by HT29 cells. FM4-64-labeled *Lp*MVs (10 μ g-protein/mL) were added to HT29 cells and incubated for 0.5 and 20 h. Nuclei were stained with DAPI, and cell membranes were stained with FITC-labeled wheat germ agglutinin (WGA). Scale bars indicate 100 μ m.

(a)



(b)



(c)

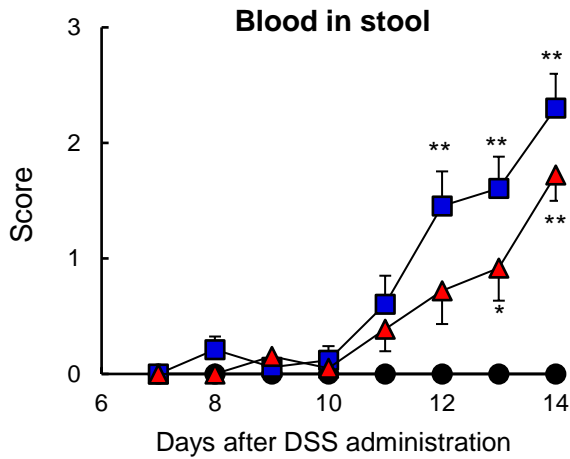


Figure S2. Changes in clinical parameters related to the disease activity index (DAI) after dextran sodium sulfate (DSS) administration to mice. Circles represent the control group ($n = 11$), squares represent the DSS group ($n = 11$), and triangles represent the DSS+MV group ($n = 12$). Data are expressed as mean \pm SE. * and ** denote $p < 0.05$ and $p < 0.01$, respectively, vs. the control group as per Kruskal-Wallis test followed by Dunn's multiple comparison test.

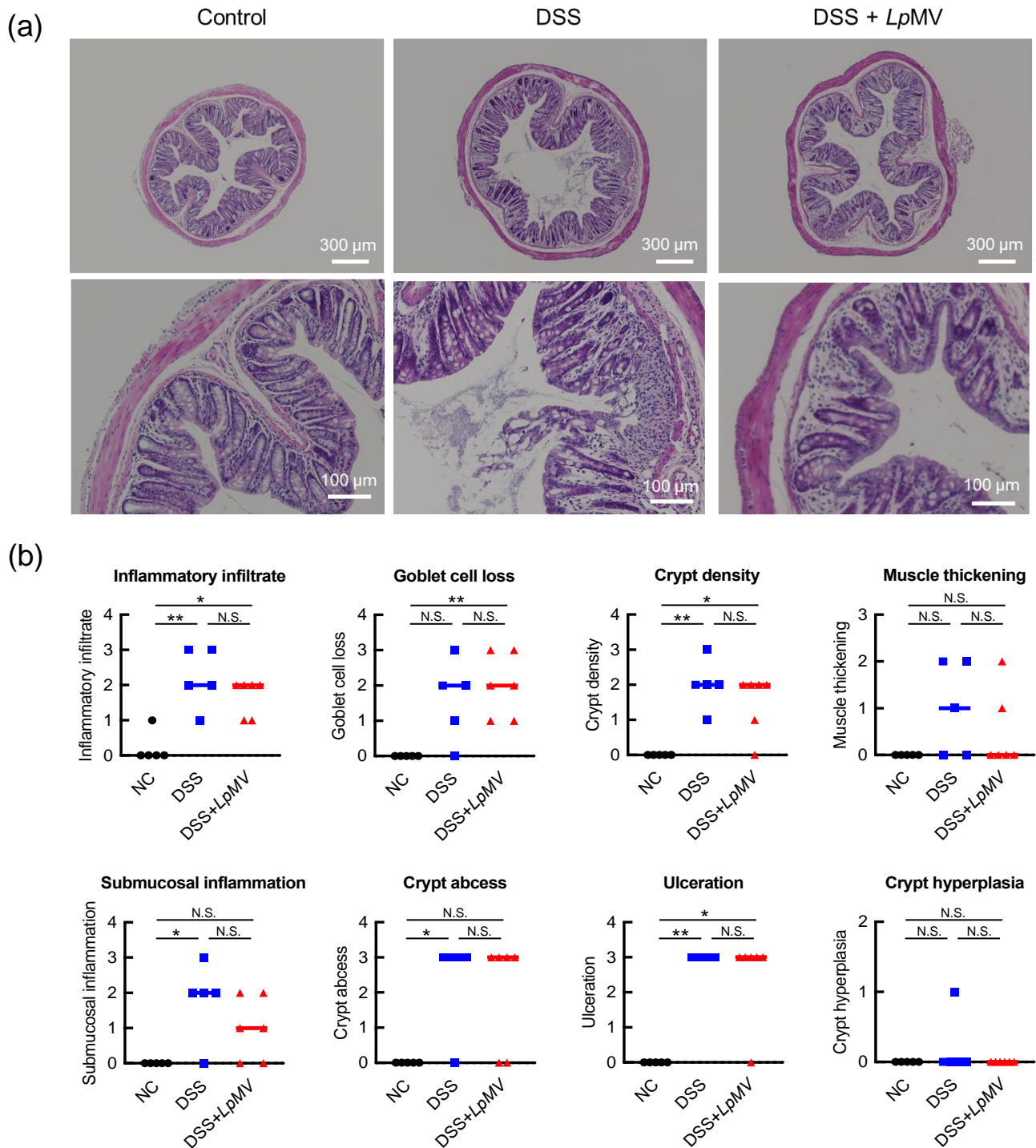


Figure S3. Colon sections and their histological evaluation. (a) Representative colon sections derived from mice on day 14 were stained with hematoxylin-eosin. (b) Histopathological grading scores were calculated based on the histological evaluation scoring criteria [18, 19]. * and ** denote $p < 0.05$ and $p < 0.01$, respectively, using Kruskal-Wallis test followed by Dunn's multiple comparison test. NC; Negative control.