

## Supplementary Information

# Comprehensive two-dimensional gas chromatography as a tool for the study of hops and their metabolites

Glaucimar A.P. Resende<sup>1,2</sup>, Michelle S.S. Amaral<sup>1</sup>, Bruno G. Botelho<sup>2</sup> and Philip J. Marriott<sup>1\*</sup>

<sup>1</sup> Australian Centre for Research on Separation Science, School of Chemistry, Monash University, Clayton, 3800 Australia.

<sup>2</sup> Chemistry Department, Universidade Federal de Minas Gerais, Belo Horizonte, 31270-901, Minas Gerais, Brazil.

\*philip.marriott@monash.edu

Metabolites

## Table of contents

<b>Table S1.</b> Hop samples information.....	2
<b>Table S2.</b> Intra-day and inter-day precision of selected peaks by HS-SPME-GC×GC–MS in hops.....	3
<b>Figure S1.</b> A comparison between two chromatographic settings for GC×GC applying HS-SPME for the hop Cascade, where the 1D column is a DB-5ms UI (30 m × 0.25 mm I.D. × 0.25 µm df) and the 2D columns: (A) BPX50(1.0 m × 0.10 mm I.D. × 0.10 µm df) and (B) SupelcoWax10 (1.0 m × 0.10 mm I.D. × 0.10 µm df) .....	4
<b>Figure S2.</b> Chromatograms of 4 types of SPME fibers, by their color in Cascade hops via HS-SPME-GC×GC–MS .....	5
<b>Table S3.</b> n-Alkanes the series C8-C21 and their respective retention times in the first ( <sup>1</sup> t <sub>R</sub> – DB-5msUI) and second ( <sup>2</sup> t <sub>R</sub> – SUPELCOWAX 10) retention times .....	6
<b>Figure S3.</b> Retention time vs n-alkanes series (C <sub>n</sub> ) plot for the calculation of the retention index by Van den Dol and Kratz equation .....	6
<b>Figure S4.</b> GC×GC–MS chromatogram for the HS–SPME of the series of n-alkanes (C8-C15) .....	7
<b>Figure S5.</b> GC×GC–MS chromatogram for the HS–SPME of the series of n-alkanes (C16-C21) .....	7
<b>Figure S6.</b> Comparison of chromatograms obtained for the Enigma (ENIG) hop by HS–SPME using (A) GC–MS and (B) GC×GC–MS followed by the identification of selected peaks (C) .....	8
<b>Figure S7.</b> Comparison of chromatograms obtained for the Zappa (ZAPP) hop by HS-SPME using (A) GC–MS and (B) GC×GC–MS followed by the (C) identification of selected peaks .....	9
<b>Table S4.</b> Information in the hop composition profile using HS-SPME-GC–MS .....	10
<b>Figure S8.</b> GC×GC-MS chromatogram for the HS-SPME of Azacca (AZAC) hop.....	13
<b>Figure S9</b> GC×GC-MS chromatogram for the HS-SPME of Loral (LORA) hop .....	13

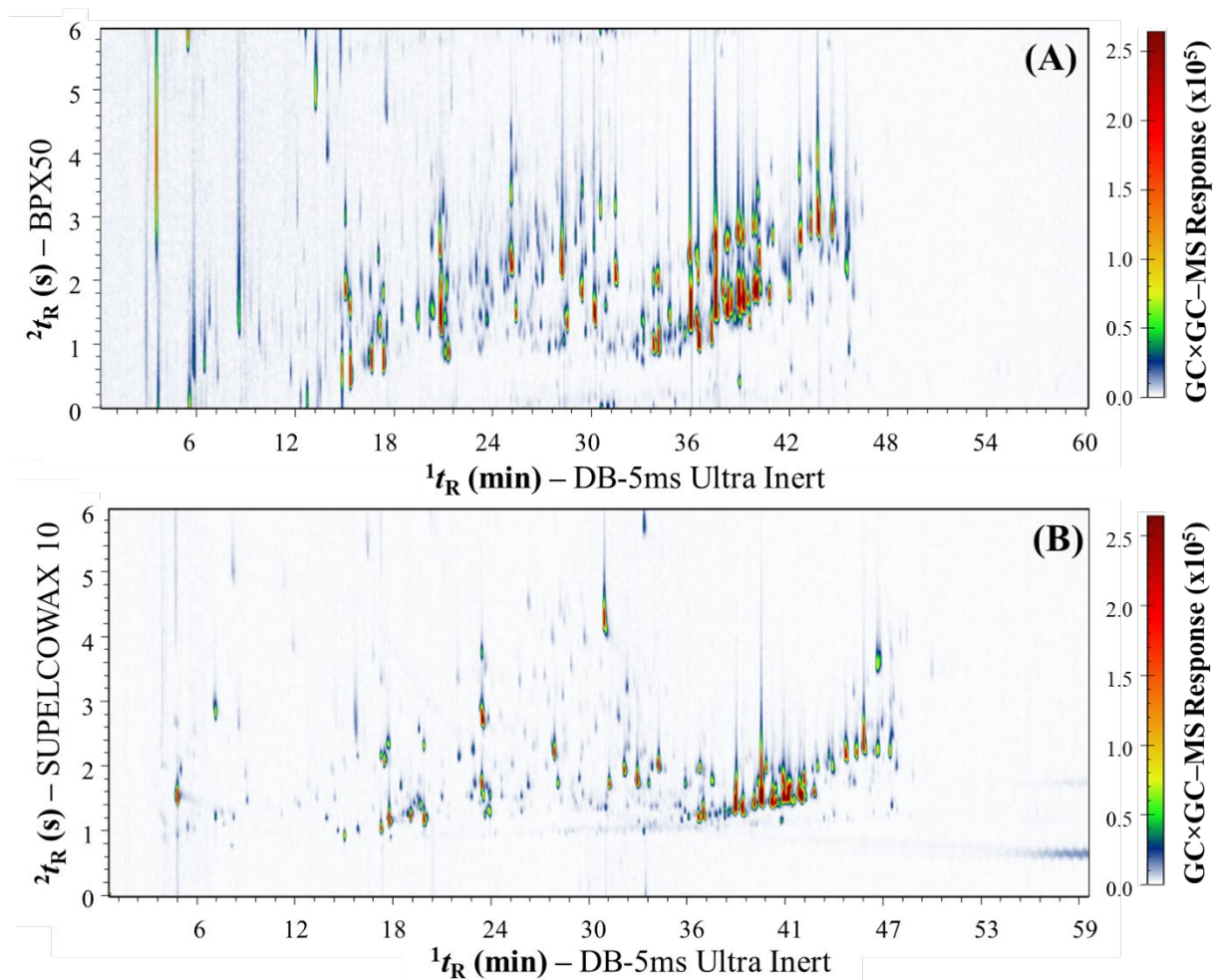
**Table S1.** Hop samples information.

	<b>Azacca (AZAC)</b>	<b>Cascade (CASC)</b>	<b>Enigma™ (ENIG)</b>	<b>Loral™ (LORA)</b>	<b>Zappa (ZAPP)</b>
<i>Class</i>	Dual Purpose	Aroma	Dual Purpose	Dual Purpose	Aroma
<i>Synonym</i>	Azaaca	-	-	HBC291	-
<i>Purpose</i>	Aroma and Bittering	Aroma	Aroma and Bittering	Aroma and Bittering	Aroma
<i>Heritage</i>	Toyomidori and ADHA 94/95	Cross of english fuggle with a male descendant of the Russia variety Serebrianka	Descendant of Swiss Tettnang hop and North America Hop	Daughter of US Glacier & US Nugget	Unknown
<i>Pellet physical description</i>	T-90 hop pellets (90% weight of the hop cone is maintained), size of the pellet is variable, it has a cylindrical shape and diameter of approximately 6 mm				
<i>Consistency</i>	A solid pellet which has an easy detection of aroma, and it can be break in powder				
<i>Pelletising temperature*</i>	<55 °C				
<i>Solubility in water*</i>	Insoluble	Insoluble	Insoluble	Insoluble	Insoluble
<i>Melting temperature (°C)*</i>	No data available	No data available	No data available	No data available	No data available
<i>Total oil (mL/100g) *</i>	1.6 - 2.5	0.8 – 2.5	0.8 – 3.2	1.5 – 3.4	1.8 – 2.5

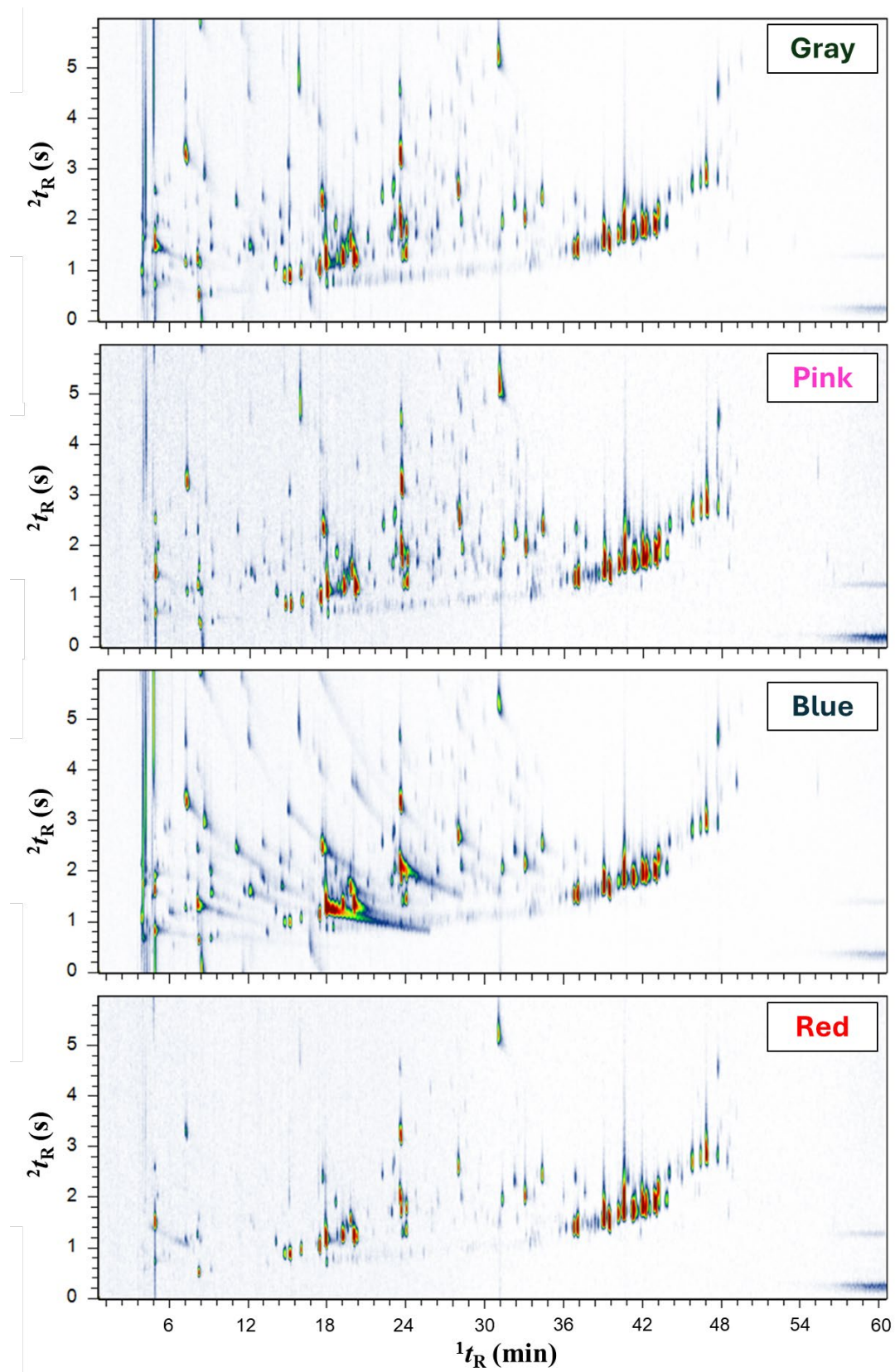
\*Information from the supplier

**Table S2.** Intra-day and inter-day precision of selected peaks by HS-SPME-GC×GC–MS in hops.

No.	Compound	Intra-day R.S.D (%) (n=5)			Inter-day R.S.D (%) (n=9)		
		<sup>1</sup> t <sub>R</sub>	<sup>2</sup> t <sub>R</sub>	Area%	<sup>1</sup> t <sub>R</sub>	<sup>2</sup> t <sub>R</sub>	Area%
1	Isobutyl isobutyrate	0.00	0.05	9.63	0.54	1.21	12.81
2	β-Myrcene	0.00	0.16	3.00	0.58	3.17	10.39
3	Isobutyl 2-methylbutanoate	0.00	0.49	6.73	0.54	4.39	14.13
4	D-Limonene	0.23	4.30	3.12	0.50	5.45	4.43
5	Perillen	0.00	0.47	5.86	0.44	8.67	8.02
6	Linalool	0.00	0.30	5.89	0.44	7.71	6.58
7	2-Undecanone	0.00	0.28	1.56	0.31	5.48	5.61
8	trans-Geranic acid methyl ester	0.00	0.24	1.85	0.30	8.02	7.11
9	Copaene	0.00	0.27	3.69	0.28	3.89	3.87
10	Caryophyllene	0.00	0.69	1.55	0.26	5.97	2.27
11	α-Bergamotene	0.00	0.39	1.87	0.26	3.54	1.65
12	(E)-β-Farnesene	0.00	0.27	4.88	0.25	5.48	4.16
13	γ-Murolene	0.00	0.60	1.78	0.25	5.63	2.24
14	α-Curcumene	0.00	0.25	2.66	0.25	6.68	3.06
15	β-Eudesmene	0.00	0.26	5.27	0.24	7.00	6.32
16	α-Selinene	0.00	0.18	3.18	0.24	5.97	4.58
17	Geranyl isobutyrate	0.00	0.33	1.51	0.22	4.41	2.79
18	β-Bisabolene	0.00	0.22	4.57	0.24	4.80	4.19
19	Calamenene	0.00	0.26	2.53	0.24	6.68	2.76
20	Zonarene	0.00	0.24	8.56	0.24	5.08	8.04
21	α-Cadinene	0.00	0.45	2.13	0.23	6.14	1.87
22	Humulene epoxide I	0.00	0.29	7.85	0.22	8.77	10.15



**Figure S1.** A comparison between two chromatographic settings for GC×GC applying HS-SPME for the hop Cascade, where the 1D column is a DB-5ms UI (30 m × 0.25 mm I.D. × 0.25 μm df) and the 2D columns: (A) BPX50(1.0 m × 0.10 mm I.D. × 0.10 μm df) and (B) SupelcoWax10 (1.0 m × 0.10 mm I.D. × 0.10 μm df)

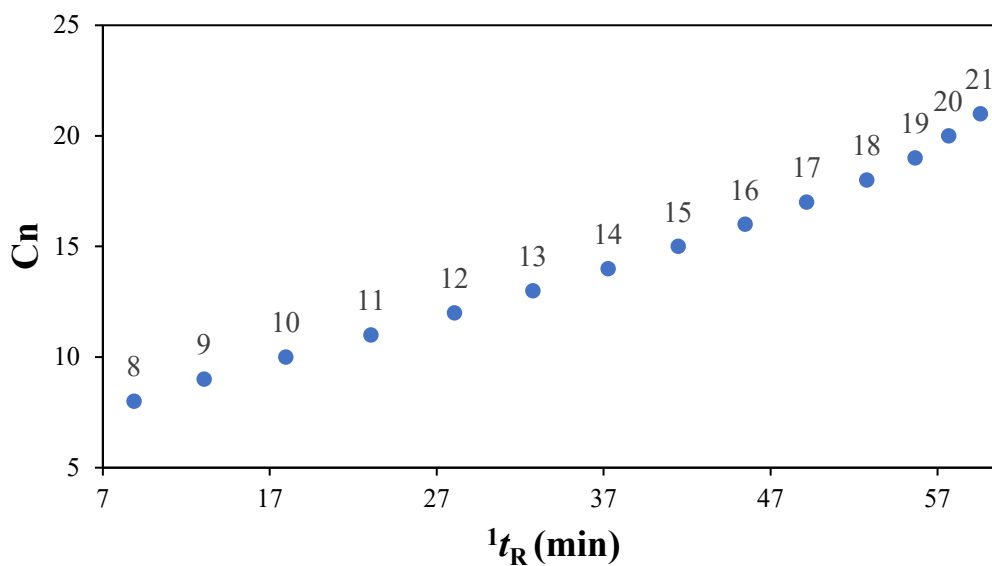


**Figure S2.** Chromatograms of 4 types of SPME fibres, by their color in Cascade hops by HS-SPME-GC×GC-MS.

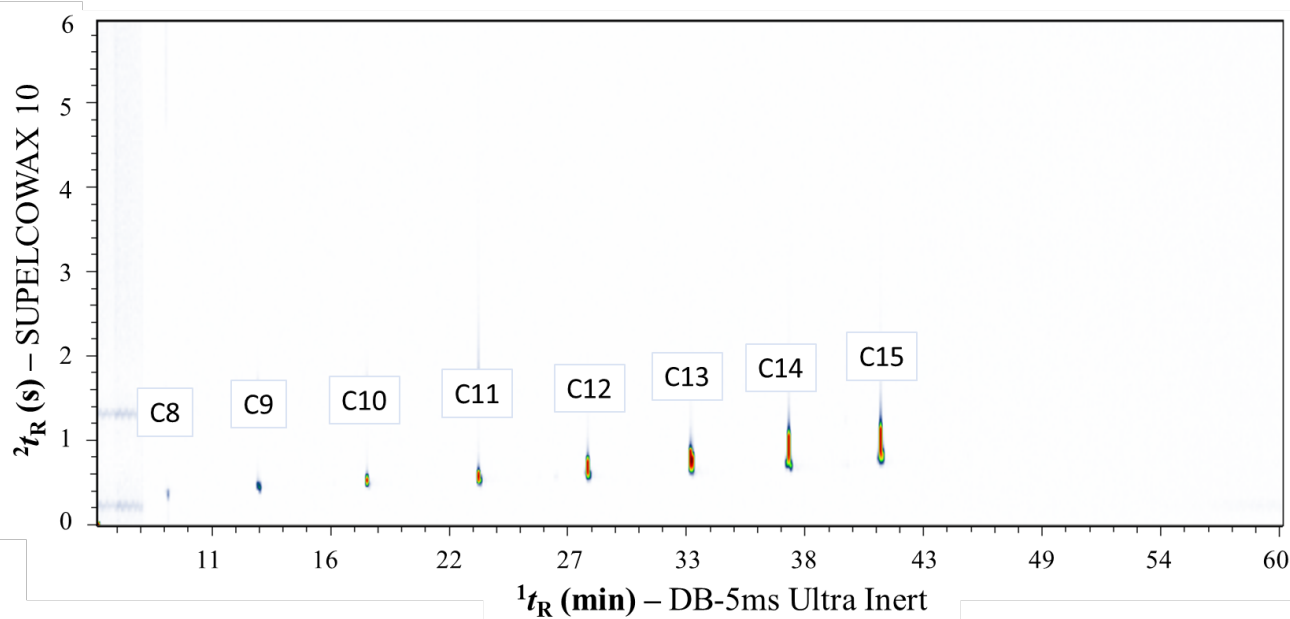
**Table S3.** n-Alkanes the series C8-C21 and their respective retention times in the first ( $^1t_R$  – DB-5msUI) and second ( $^2t_R$  – SUPELCOWAX 10) retention times

Alkane	$^1t_R$ (min)	$^2t_R$ (s)	CAS	Formula
C8	8.86	0.36	111-65-9	C8H18
C9	13.06	0.40	111-84-2	C9H20
C10	17.96	0.52	124-18-5	C10H22
C11	23.06	0.57	1120-21-4	C11H24
C12	28.06	0.64	112-40-3	C12H26
C13	32.76	0.74	629-50-5	C13H28
C14	37.26	0.87	629-59-4	C14H30
C15	41.46	0.88	629-62-9	C15H32
C16	45.46	1.03	544-76-3	C16H34
C17	49.16	1.12	629-78-7	C17H36
C18	52.76	1.23	593-45-3	C18H38
C19	55.66	1.01	629-92-5	C19H40
C20	57.66	0.95	112-95-8	C20H42
C21	59.56	1.02	629-94-7	C21H44

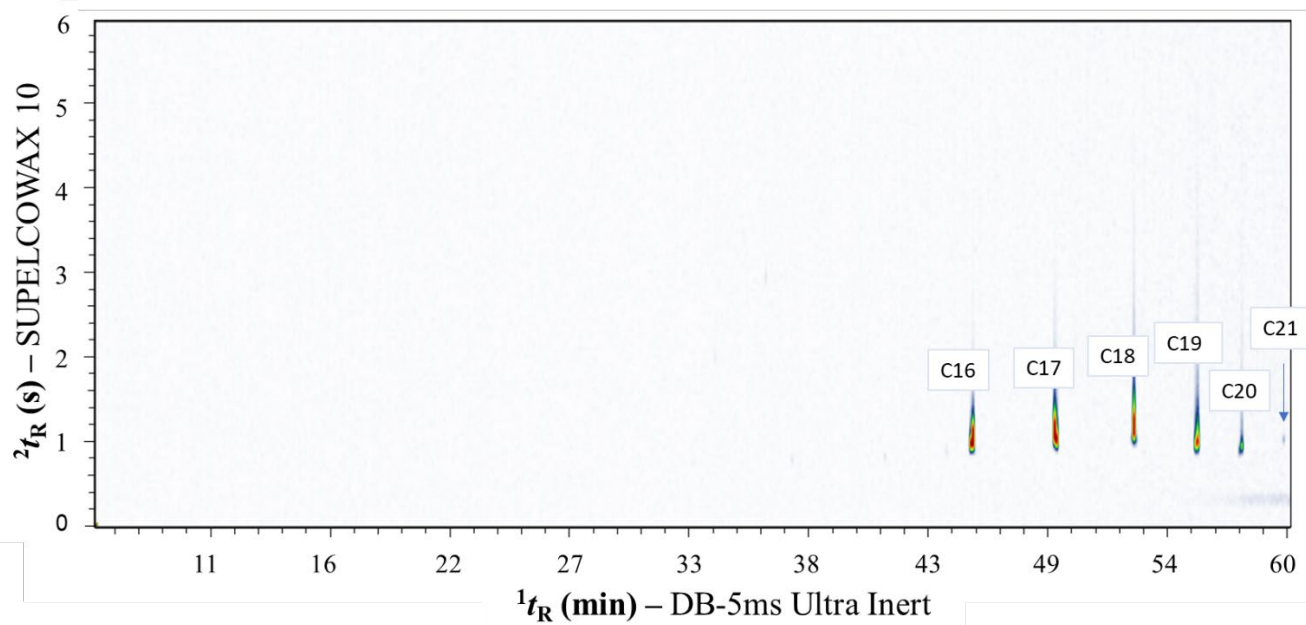
**Figure S3.** Retention time vs n-alkanes series (Cn) plot for the calculation of the retention index by Van den Dol and Kratz equation



**Figure S4.** GC×GC–MS chromatogram for the HS–SPME of the series of n-alkanes (C8–C15)

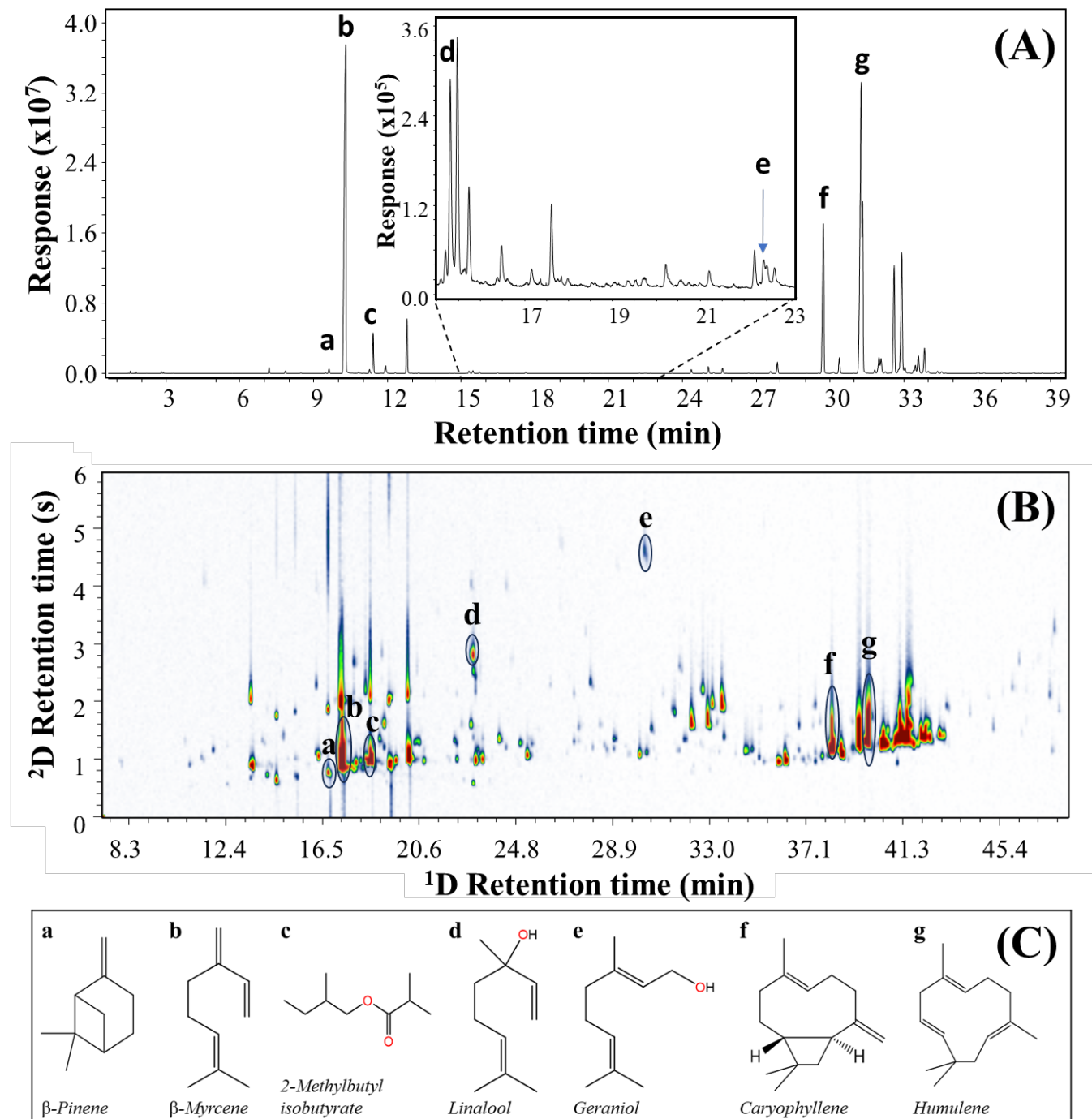


**Figure S5.** GC×GC–MS chromatogram for the HS–SPME of the series of n-alkanes (C16–C21)



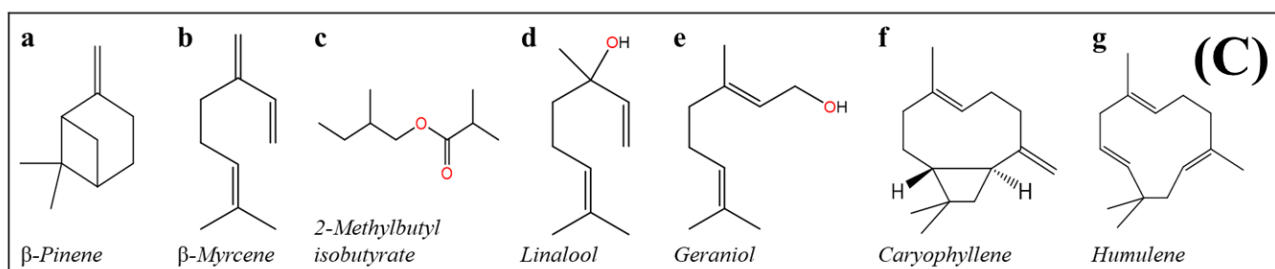
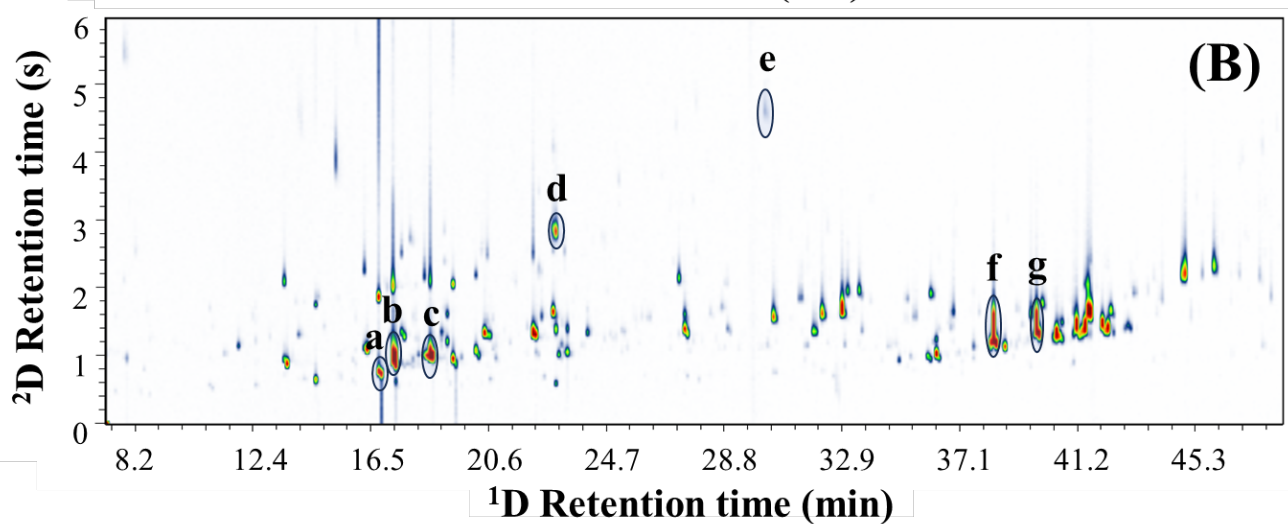
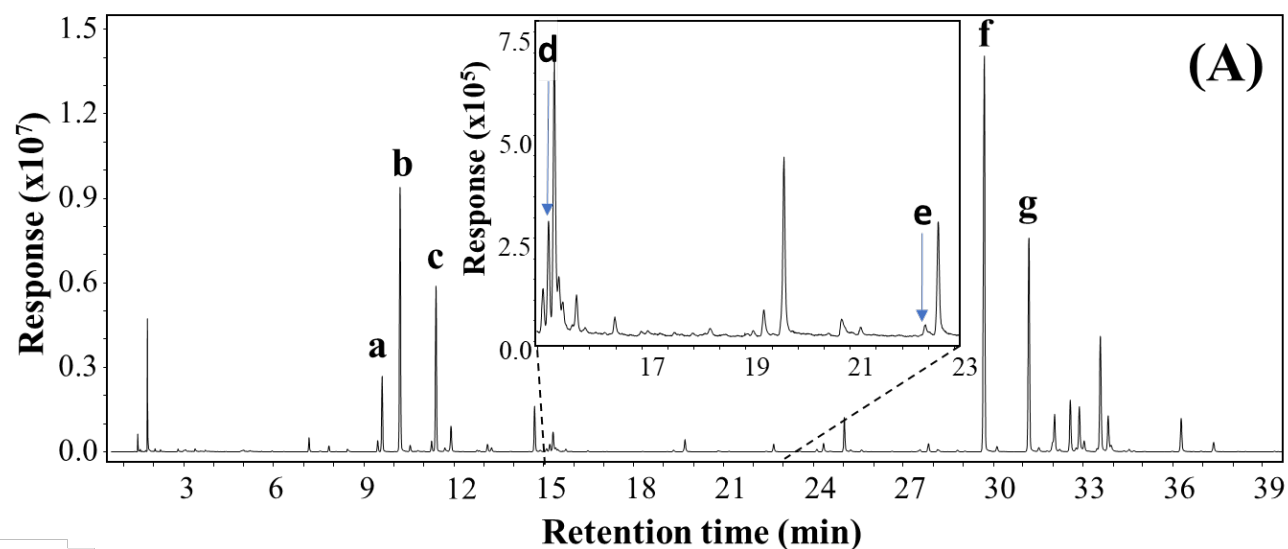
## A comparison of the GC–MS and GC×GC–MS for the hop samples

**Figure S6.** Comparison of chromatograms obtained for the Enigma (ENIG) hop by HS–SPME using (A) GC–MS and (B) GC×GC–MS followed by the identification of selected peaks (C).





**Figure S7.** Comparison of chromatograms obtained for the Zappa (ZAPP) hop by HS-SPME using (A) GC–MS and (B) GC×GC–MS followed by the (C) identification of selected peaks.



**Table S4.** Information in the hop composition profile using HS-SPME-GC–MS

No.	<i>t<sub>R</sub></i> (min)	Compound*	CAS	Formula	Lit. RI	Exp. RI	Relative GC chromatographic area (%) (Mean values $\pm$ SD for n=3)					
							CASC		ENIG		ZAPP	
1	5.2	Propyl isobutyrate	644-49-5	C7H14O2	842 $\pm$ 6	851	ND		0.0033 $\pm$ 0.0006		0.1461 $\pm$ 0.0062	
2	6.0	2-Methylbutyl acetate	624-41-9	C7H14O2	880 $\pm$ 3	876	ND		0.0046 $\pm$ 0.0009		0.0498 $\pm$ 0.0053	
3	7.1	Isobutyl isobutyrate	97-85-8	C8H16O2	910 $\pm$ 4	913	0.0214 $\pm$ 0.0018		ND		0.5585 $\pm$ 0.0317	
4	7.8	$\alpha$ -Thujene	2867-05-2	C10H16	929 $\pm$ 2	929	0.2195 $\pm$ 0.0085		ND		0.2758 $\pm$ 0.0170	
5	7.8	$\alpha$ -Pinene	80-56-8	C10H16	937 $\pm$ 3	930	0.2727 $\pm$ 0.0149		0.1174 $\pm$ 0.0222		ND	
6	8.4	4,4-Dimethyl-2-buten-4-olide	20019-64-1	C6H8O2	952 $\pm$ 5	944	0.1859 $\pm$ 0.0015		ND		0.1892 $\pm$ 0.0138	
7	8.5	Camphene	79-92-5	C10H16	952 $\pm$ 2	945	ND		0.0339 $\pm$ 0.0069		ND	
8	9.5	2-Methylbutyl propionate	2438-20-2	C8H16O2	970 $\pm$ 4	970	ND		0.0427 $\pm$ 0.0100		0.5077 $\pm$ 0.0256	
9	9.6	$\beta$ -Pinene	127-91-4	C10H16	979 $\pm$ 2	974	0.4879 $\pm$ 0.0344		0.2303 $\pm$ 0.0290		3.4566 $\pm$ 0.2572	
10	10.1	6-Methyl-5-heptene-2-one	110-93-0	C8H14O	986 $\pm$ 2	985	0.2180 $\pm$ 0.0152		ND		ND	
11	10.3	$\beta$ -Myrcene	123-35-3	C10H16	991 $\pm$ 2	991	4.2778 $\pm$ 0.3663		29.5075 $\pm$ 2.5200		13.1833 $\pm$ 1.3945	
12	10.8	Isobutyl 2-methylbutanoate	2445-67-2	C9H18O2	1004 $\pm$ 4	1003	ND		0.0603 $\pm$ 0.0059		0.4956 $\pm$ 0.0592	
13	11.3	Isoamyl isobutanoate	2050-01-3	C9H18O2	1015 $\pm$ 3	1012	ND		0.1858 $\pm$ 0.0172		ND	
14	11.4	2-Methylbutyl isobutyrate	2445-69-4	C9H18O2	1016 $\pm$ 2	1016	0.4811 $\pm$ 0.0333		2.0756 $\pm$ 0.1742		7.9836 $\pm$ 0.6122	
15	11.7	p-Cymene	99-87-6	C10H14O	1025 $\pm$ 2	1022	0.4564 $\pm$ 0.0451		0.0112 $\pm$ 0.0049		0.2097 $\pm$ 0.0302	
16	11.9	D-Limonene	5989-27-5	C10H16	1030 $\pm$ 2	1026	1.5083 $\pm$ 0.1623		0.5335 $\pm$ 0.0425		1.3000 $\pm$ 0.1141	
17	12.3	$\beta$ -Ocimene	13877-91-3	C10H16	1037 $\pm$ 7	1035	ND		0.0404 $\pm$ 0.0058		ND	
18	12.8	trans- $\beta$ -Ocimene	3779-61-1	C10H16	1049 $\pm$ 2	1045	ND		2.8898 $\pm$ 0.2404		0.0819 $\pm$ 0.0039	
19	13.1	Prenyl isobutyrate	76649-23-5	C9H16O2	1052 $\pm$ 1	1052	ND		ND		0.3941 $\pm$ 0.0150	
20	13.3	$\gamma$ -Terpinene	99-85-4	C10H16	1060 $\pm$ 3	1057	0.0208 $\pm$ 0.0040		ND		ND	
21	13.9	cis-Linalool oxide	5989-33-3	C10H18O2	1074 $\pm$ 4	1069	0.0507 $\pm$ 0.0077		ND		0.0257 $\pm$ 0.0026	
22	14.7	Methyl 6-methyl heptanoate	2519-37-1	C9H18O2	NA	1086	ND		ND		2.1707 $\pm$ 0.0722	
23	15.0	2-Nonanone	821-55-6	C9H18O	1092 $\pm$ 2	1092	0.0293 $\pm$ 0.0037		ND		ND	
24	15.1	Hop ether	344294-72-0	C10H16O	NA	1095	0.1956 $\pm$ 0.0419		0.0021 $\pm$ 0.0007		0.1472 $\pm$ 0.0358	
25	15.2	Perillen	539-52-6	C10H14O	1101 $\pm$ 2	1097	1.1136 $\pm$ 0.1940		0.0174 $\pm$ 0.0064		0.3953 $\pm$ 0.0452	
26	15.3	Linalool	78-70-6	C10H18O	1099 $\pm$ 2	1099	1.2597 $\pm$ 0.2218		0.1266 $\pm$ 0.0350		1.0377 $\pm$ 0.0886	
27	15.5	2-Methylbutyl 2-methylbutanoate	2445-78-5	C10H20O2	1105 $\pm$ 2	1103	ND		0.1464 $\pm$ 0.0235		0.1099 $\pm$ 0.0132	
28	15.7	2-Methylbutyl isovalerate	2445-77-4	C10H20O3	1107 $\pm$ 2	1108	0.1321 $\pm$ 0.0258		0.0471 $\pm$ 0.0084		0.1106 $\pm$ 0.0082	

29	16.5	Methyl octanoate	111-11-5	C9H18O2	1126±2	1124	ND	0.0215 ± 0.0163	0.0677 ± 0.0061
30	17.2	(4E,6E)-Allocimene	3016-19-1	C10H16	1144±1	1138	ND	0.0106 ± 0.0022	ND
31	17.6	Hexyl isobutyrate	2349-07-7	C10H20O2	1150±2	1148	ND	0.0448 ± 0.0123	ND
32	19.7	Methyl 6-methyloctanoate	5129-62-4	C10H20O2	1193±5	1192	ND	ND	0.7060 ± 0.0632
33	21.2	Methyl nonanoate	1731-84-6	C10H20O2	1225±2	1223	ND	0.0108 ± 0.0030	ND
34	22.2	Heptyl isobutyrate	2349-13-5	C11H22O2	1247±1	1246	ND	0.0190 ± 0.0048	ND
35	22.4	Geraniol	106-24-1	C10H18O	1255±3	1250	1.0079 ± 0.0040	0.0224 ± 0.0065	0.0516 ± 0.0023
36	23.5	(Z)-Undec-6-en-2-one	107853-70-3	C11H20O	1274±NA	1274	0.2124 ± 0.0244	ND	0.0634 ± 0.0136
37	24.1	Methyl 8-methylnonanoate	5129-54-4	C11H22O2	1277±NA	1287	ND	ND	0.1505 ± 0.0252
38	24.3	2-Undecanone	112-12-9	C11H22O	1294±2	1292	0.6527 ± 0.0519	0.1883 ± 0.0511	0.4179 ± 0.0661
39	24.8	2-Undecanol	1653-30-1	C11H24O	1307±4	1302	ND	0.0395 ± 0.0065	ND
40	25.0	Methyl (Z)-4-decenoate	1191-02-2	C11H20O2	NA	1307	ND	0.3158 ± 0.0763	1.6317 ± 0.2994
41	25.6	<i>trans</i> -Geranic acid methyl ester	1189-09-9	C11H18O2	1324±2	1320	0.4456 ± 0.0005	0.2622 ± 0.0638	0.1026 ± 0.0145
42	26.6	$\alpha$ -Cubebene	17699-14-8	C15H24	1351±2	1343	0.0306 ± 0.0033	ND	0.0534 ± 0.0043
43	26.7	n-Octyl Isobutyrate	109-15-9	C12H24O2	1346±3	1344	ND	0.0287 ± 0.0074	ND
44	27.3	2-Methyl-1-undecanal	110-41-8	C12H24O	1365±2	1358	0.0620 ± 0.0098	ND	ND
45	27.6	Ylangene	14912-44-8	C15H24	1372±2	1364	0.5011 ± 0.0568	0.1145 ± 0.0339	0.1948 ± 0.0296
46	27.9	Copaene	3856-25-5	C15H25	1376±2	1371	1.8634 ± 0.2077	0.5691 ± 0.1031	0.5130 ± 0.0783
47	28.5	(+)-Sativene	3650-28-0	C15H24	1396±0	1385	0.0429 ± 0.0025	0.0113 ± 0.0031	ND
48	28.8	2-Dodecanone	6175-49-1	C12H24O	1396±9	1393	ND	ND	0.1124 ± 0.0201
49	29.1	Isocaryophyllene	118-65-0	C15H24	1406±3	1398	ND	ND	0.0504 ± 0.0095
50	29.5	cis- $\alpha$ -Bergamotene	18252-46-5	C15H24	1415±3	1409	ND	0.0187 ± 0.0060	ND
51	29.7	Caryophyllene	87-44-5	C15H24	1419±3	1414	12.9262 ± 0.4946	9.4133 ± 0.2803	23.6843 ± 1.2782
52	30.1	$\beta$ -Copaene	18252-44-3	C15H24	1432±3	1424	0.3567 ± 0.0608	0.0667 ± 0.0145	0.3057 ± 0.0437
53	30.4	$\alpha$ -Bergamotene	13474-59-4	C15H24	1435±3	1429	1.9188 ± 0.0244	0.8366 ± 0.0969	ND
54	31.3	Humulene	6753-98-6	C15H24	1454±3	1451	37.6843 ± 0.8950	22.0169 ± 1.0923	12.3631 ± 1.1516
55	31.3	(E)- $\beta$ -Farnesene	18794-84-8	C15H24	1457±2	1452	ND	7.8769 ± 0.2327	ND
56	32.0	$\gamma$ -Selinene	515-17-3	C15H24	1479±6	1468	ND	1.0421 ± 0.0920	ND
57	32.1	$\gamma$ -Muurolene	30021-74-0	C15H24	1477±3	1470	3.6014 ± 0.2510	0.8672 ± 0.0684	2.6978 ± 0.4025
58	32.6	$\beta$ -Eudesmene	17066-67-0	C15H24	1486±3	1483	4.4862 ± 0.1164	6.7028 ± 0.3217	2.8692 ± 0.4124
59	32.9	$\alpha$ -Selinene	473-13-2	C15H24	1494±3	1490	4.0265 ± 0.2012	7.9672 ± 0.3473	2.6219 ± 0.3578
60	33.0	$\alpha$ -Muurolene	10208-80-7	C15H24	1499±3	1493	1.0388 ± 0.2004	0.3349 ± 0.0259	0.6550 ± 0.0779

61	33.5	Methyl 3,6-dodecadienoate	16106-01-7	C13H22O2	NA	1504	ND	0.4518	±	0.0331	0.1824	±	0.0228
62	33.6	β-Bisabolene	495-61-4	C15H24	1509±3	1506	0.1976	±	0.1127	ND	ND		
63	33.6	γ-Cadinene	39029-41-9	C15H24	1513±2	1507	2.6860	±	0.2529	1.2033	±	0.0577	7.2685 ± 0.5720
64	33.8	δ-Cadinene	483-76-1	C15H24	1524±2	1513	2.8384	±	0.1885	1.5243	±	0.0913	1.9931 ± 0.2319
65	33.9	Calamenene	483-77-2	C15H22	1523±5	1516	0.9033	±	0.0064	ND	0.3754	±	0.0489
66	34.0	Zonarene	41929-05-9	C15H24	1527±N/A	1517	ND			0.1664	±	0.0134	ND
67	34.4	Cadine-1,4-diene	16728-99-7	C15H24	1533±4	1527	0.0326	±	0.0003	0.1081	±	0.0199	0.0419 ± 0.0068
68	34.6	α-Cadinene	24406-05-1	C15H24	1538±1	1531	0.3505	±	0.0123	0.0923	±	0.0152	0.1483 ± 0.0282
69	34.7	α-Calacorene	21391-99-1	C15H20	1542±3	1535	0.2053	±	0.0014	ND	0.0583	±	0.0110
70	36.1	(Z)-Tetradec-6-en-2-one	NA	C14H26O	1570±N/A	1569	0.1466	±	0.0121	ND	ND		
71	36.3	Caryophyllene oxide	1139-30-6	C15H24O	1581±2	1575	0.5825	±	0.0260	ND	2.1205	±	0.1589
72	37.3	Humulene epoxide I	19888-33-6	C15H24O	1604±3	1602	0.3161	±	0.0358	0.0102	±	0.0011	0.0498 ± 0.0056
73	37.4	Humulene epoxide II	19888-34-7	C15H24O	1606±2	1602	2.3933	±	0.0451	ND	0.6809	±	0.0629

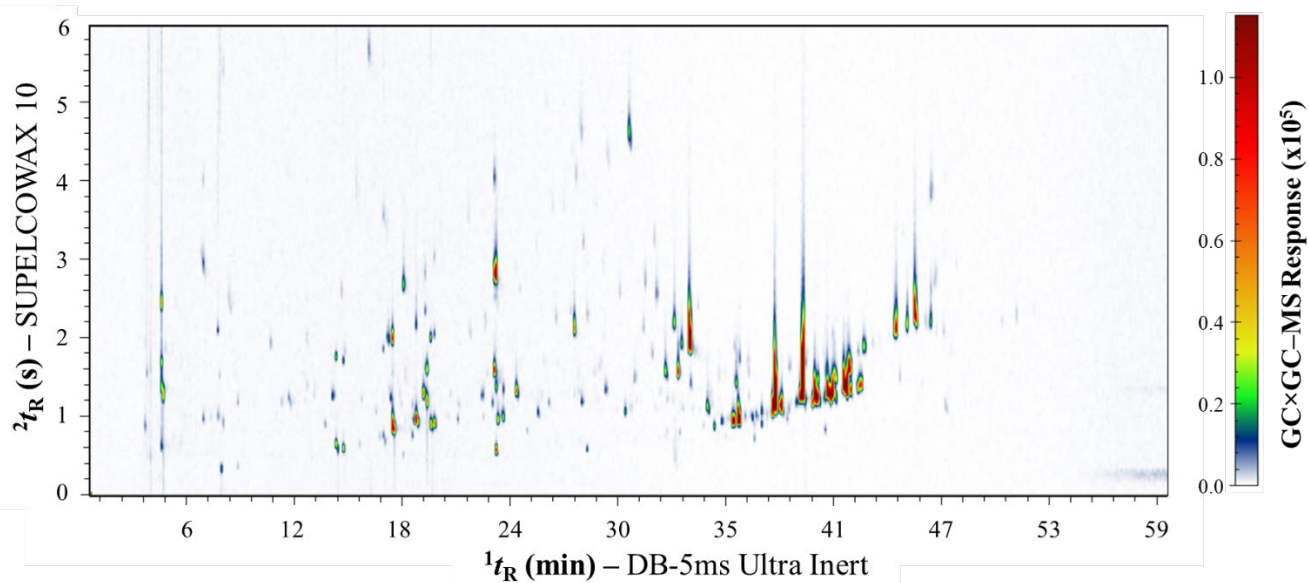
Abbreviations:  $t_R$  – Retention time RI – Retention index; CASC –Cascade; ENIG –Enigma; ZAPP – Zappa; NA – Not applicable or not found; ND – Not detected.

\* Tentative identification

<sup>a</sup> Lit. RI, literature retention indexes for the compounds on a semi-standard non-polar column, 5%-phenyl using NIST 11 library,

<sup>b</sup> Exp. RI, experimental retention index calculated by the Van den Dol and Kratz equation.

**Figure S8.** GC×GC–MS chromatogram for the HS-SPME of Azacca (AZAC) hop



**Figure S9.** GC×GC–MS chromatogram for the HS-SPME of Loral (LORA) hop

