



Supplementary material S1.

Links to websites where the information about the study was distributed.

<https://www.kaunoklinikos.lt/apie-mus/naujienos/covid-19-liga-kokie-pozymiai-ir-liekamieji-reiskiniai-labiausiai-vargina-lietuvius.html>

https://www.facebook.com/groups/Virusas/?multi_permalink=648288256333847

https://www.facebook.com/groups/1994091020875362/?multi_permalink=3124472811170505 (closed)

<https://www.facebook.com/groups/159021887526863>

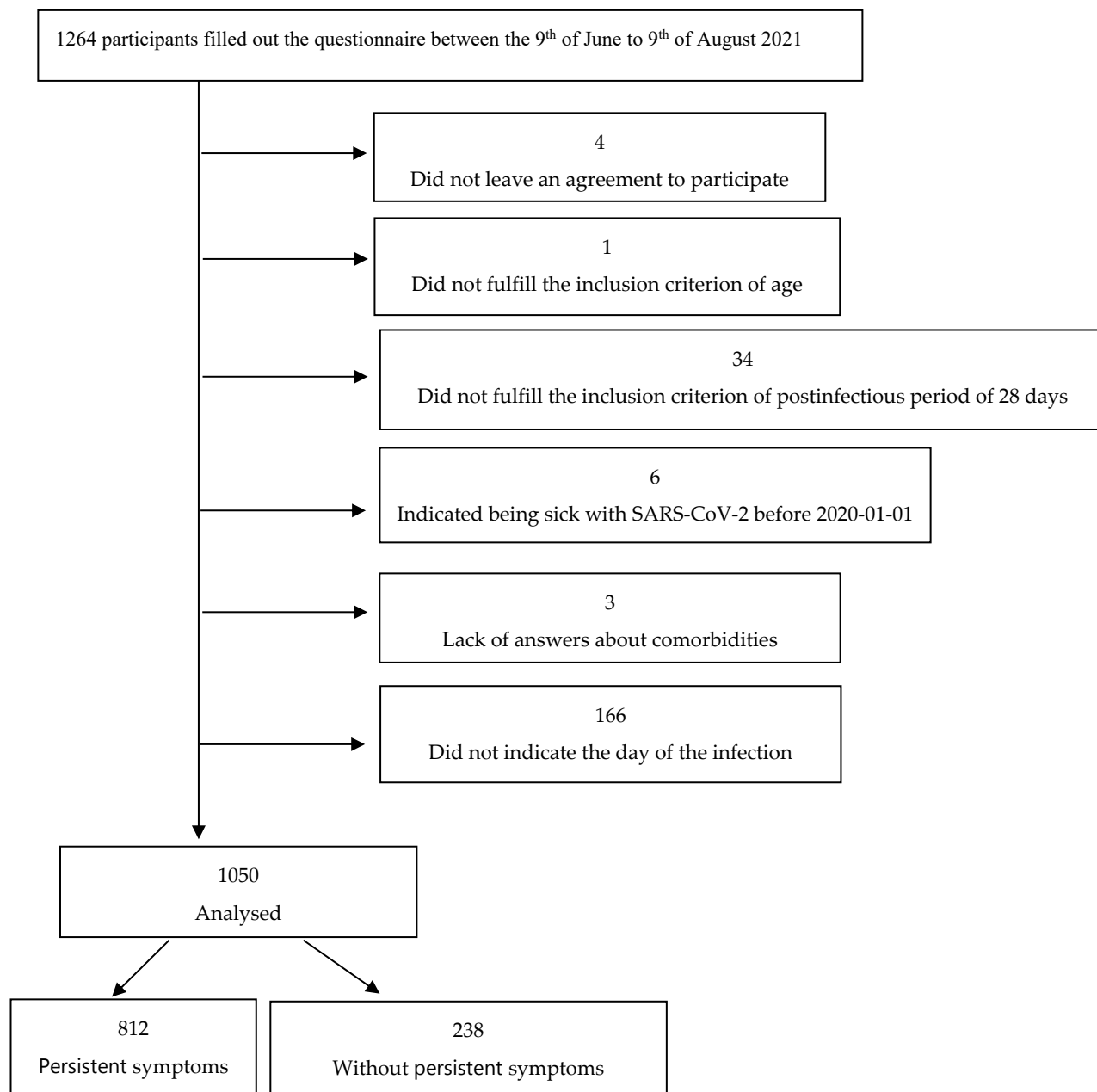
https://www.facebook.com/groups/412929278885515/?multi_permalink=2097940567051036 (closed)

<https://www.facebook.com/groups/3495414077220547>

<https://www.facebook.com/groups/lietuvos.mamyciu.turgelis>

<https://www.facebook.com/groups/1312138168987450>

<https://www.facebook.com/groups/371615077313631>

Supplementary Figure S1. Participants of survey.

Supplementary Table S1. Disorders presented as the number of participants as well as percentage of the whole population (in brackets) indicating one or more disorders. Disorders are presented as grouped and as indicated in the questionnaire. “Indicating” means the number of indicated disorders (more than 1) in the questionnaire. The total population was 1,050 participants.

Disorders indicated in the questionnaire	Number of participants indicating each disorder
Cardiovascular (6)	194 (19%)
1. High blood pressure / arterial hypertension	153 (15%)
	59 (6%)
2. Other cardiovascular diseases	2 (0.2%)
3. Chronic ischemic heart disease	1 (0.1%)
4. Arrhythmia	1 (0.1%)
5. Tachycardia	1 (0.1%)
6. POTS	Indicating 2 cardiovascular disorders N= 23 (2%)
Endocrine (3)	121 (12%)
7. Obesity	96 (9%)
8. Other metabolic diseases	25 (2%)
9. Diabetes	21 (2%)
	Indicating 2 endocrinedisorders N=17 (2%)
	Indicating 3 endocrine disorders N=2 (0.2%)
Thyroidea-related (5)	82 (8%)
10. Hypothyroidism	53 (5%)
11. Thyroid diseases	25 (2%)
12. Autoimmune thyroiditis	2 (0.2%)
13. Thyrotoxicosis	1 (0.1%)
14. Nodular goitre	1 (0.1%)
Neurological (3)	103 (10%)
15. Neurological diseases	65 (6%)
16. Sleep disorders	48 (5%)
17. Epilepsy	1 (0.1%)
	Indicating 2 neurological disorders N=12 (1%)
Psychiatric (4)	74 (7%)

18. Anxiety	55 (5%)
19. Depression	31 (3%)
20. Other psychiatric disorders	5 (0.5%)
21. Bipolar syndrome	1 (0.1%)
	Indicating 2 psychiatric disorders N=14 (1%) Indicating 3 psychiatric disorders N=2 (0.2%)
Gastrointestinal (5)	74 (7%)
22. Diseases of the gastrointestinal tract	69 (7%)
23. Hernia	1 (0.1%)
24. Gilbert's syndrome	2 (0.2%)
25. Colitis	1 (0.1%)
26. Gallbladder disease	1 (0.1%)
27. Allergic diseases	71 (7%)
Pulmonary (3)	53 (5%)
28. Asthma	34 (3%)
29. Other lung diseases	15 (1%)
30. Diseases of the upper respiratory tract	7 (0.7%)
	Indicating 2 pulmonary disorders N=3 (0.3%)
Inflammatory rheumatic (2)	34 (3%)
31. Rheumatic diseases	33 (3%)
32. Rheumatoid arthritis	1 (0.1%)
Chronic pain (3)	32 (3%)
33. Chronic pain syndrome	25 (2%)
34. Migraine	6 (0.6%)
35. Other chronic pain	1 (0.1%)
Haematological (2)	19 (2%)
36. Anaemia	12 (1%)
37. Blood clotting disorders	7 (0.7%)
38. Oncological diseases	18 (2%)
Dermatological (3)	18 (2%)

39. Skin diseases	12 (1%)
40. Psoriasis	5 (0.5%)
41. Vertigo syndrome	1 (0.1%)
42. Kidney disease	11 (1%)
Gynaecological (3)	10 (0.9%)
43. Gynaecological diseases	8 (0.8%)
44. Polycystic ovary syndrome	1 (0.1%)
45. Endometriosis	1 (0.1%)
	Indicating 2 gynaecological disorders N=1 (0.1%)
46. Immunodeficiency diseases	6 (0.6%)
Others (3):	3 (0.3%)
47. Autoimmune diseases	1 (0.1%)
48. Glaucoma	1 (0.1%)
49. Otosclerosis	1 (0.1%)

Supplementary Table S2. Persistent symptoms in 1,050 participants presented as numbers and percentages. The data show all persistent symptoms regarding intake of medication prior acute SARS-CoV-2 infection. Chi-square test between the groups, p value lower than 0.05 is indicated in bold style.

	Participants indicating persistent symptoms	Reported no medication prior to acute infection N, (%)	Reported medication prior to acute infection N, (%)	p-value between the groups
1. Reduced physical capacity	423 (40.3%)	291 (38.2 %)	132 (45.8 %)	p=0.015
2. Common fatigue	405 (38.6%)	271 (35.6 %)	134 (46.5 %)	p<0.001
3. Memory problems	354 (33.7%)	239 (31.4 %)	115 (39.9 %)	p=0.006
4. Concentration disorders	313 (29.8%)	223 (29.3 %)	90 (31.3 %)	p=0.289
5. Altered sense of smell	247 (23.5%)	194 (25.5 %)	53 (18.4 %)	p=0.009
6. Headache	209 (19.9%)	139 (18.2 %)	70 (24.3 %)	p=0.019

7. Heart palpitations / tachycardia	207 (19.7%)	132 (17.3 %)	75 (26 %)	P=0.001
8. Unstable mood	199 (19%)	146 (19.2 %)	53 (18.4 %)	p=0.427
9. Hair loss	183 (17.4%)	109 (14.1 %)	74 (25.4 %)	p<0.001
10. Insomnia	181 (17.2%)	124 (16.3 %)	57 (19.8 %)	p=0.106
11. Shortness of breath	158 (15%)	100 (13.1 %)	58 (20.1 %)	p<0.004
12. Pain floating around	154 (14.7%)	100 (13. %)	54 (18.8 %)	p=0.015
13. Anxiety	149 (14.2%)	105 (13.8 %)	44 (15.3 %)	p=0.298
14. Dizziness	140 (13.3%)	89 (11.7 %)	51 (17.7 %)	p<0.008
15. Altered sense of taste	126 (12%)	101 (13.3 %)	25 (8.7 %)	p=0.025
16. Increased sleepiness	125 (11.9%)	92 (12.1 %)	33 (11.5 %)	p=0.438
17. Sweating night-time	111 (10.6%)	66 (8.7 %)	45 (15.6 %)	P=0.001
18. Muscle/bone/joint pain	105 (14.7%)	57 (7.5 %)	48 (16.7 %)	p<0.001
19. Pain/pressure in chest	97 (9.2%)	62 (8.1 %)	35 (12.2 %)	p=0.032
20. Sensation of head pressure	92 (8.8%)	61 (8.0 %)	31 (10.8 %)	p=0.1
21. Dry eyes	84 (8%)	55 (7.2 %)	29 (10.1 %)	p=0.084
22. Increased weight	84 (8%)	45 (5.9 %)	39 (13.5 %)	p<0.001
23. Blurred vision	78 (7.4%)	43 (5.6 %)	35 (12.2 %)	p<0.001
24. Increased blood pressure	76 (7.2%)	46 (6 %)	30 (10.4 %)	p=0.012
25. Low back pain	75 (7.1%)	40 (5.2 %)	35 (12.2 %)	p<0.001
26. Cramps in muscles	72 (6.9%)	41 (6.8 %)	31 (10.8 %)	P=0.002
27. Dry skin	72 (6.9%)	47 (7.5 %)	25 (5.8 %)	p=0.098
28. Balance problems	68 (6.5%)	50 (6.6 %)	18 (6.3 %)	p=0.49
29. Other sleep problems	65 (6.2%)	47 (6.2 %)	18 (6.3 %)	p=0.53
30. Dry cough	62 (5.9%)	40 (5.2 %)	22 (7.6 %)	p=0.096
31. Reflux in stomach	60 (5.7%)	30 (3.9 %)	30 (10.4 %)	p<0.001
32. Lump in throat	59 (5.6%)	36 (4.7 %)	23 (8.0 %)	p=0.032
33. Cold feet/numbness/pain	59 (5.6%)	29 (3.8 %)	30 (10.4 %)	p<0.001
34. Fear	57 (5.4%)	34 (4.5 %)	23 (8.0 %)	p=0.021
35. Blinking in the eyes	55 (5.2%)	36 (4.7 %)	19 (6.6 %)	p=0.145
36. Cold hands/numbness/pain	54 (5.1%)	32 (4.2 %)	22 (7.6 %)	p=0.021
37. Varying symptoms	54 (5.1%)	38 (5.0 %)	16 (5.6 %)	p=0.407
38. Pain in thoracic spine/neck	52 (5%)	26 (3.4 %)	26 (9.0 %)	p<0.001
39. Hearing impairment (growl / tinnitus)	48 (4.6%)	28 (3.7 %)	20 (6.9 %)	P=0.021
40. Lack of appetite	47 (4.5%)	35 (4.6 %)	12 (4.2 %)	p=0.457
41. Clogged / running nose	47 (4.5%)	36 (4.7 %)	11 (3.8 %)	p=0.328
42. Great / constant thirst	45 (4.3%)	30 (3.9 %)	15 (5.2 %)	p=0.227
43. Weight loss	44 (4.2%)	29 (3.8 %)	15 (5.2 %)	p=0.199
44. Various skin rashes	40 (3.8%)	28 (3.7 %)	12 (4.2 %)	p=0.415
45. Cough / sputum	40 (3.8%)	25 (3.3 %)	15 (5.2 %)	p=0.103
46. Other neuralgic pains	36 (3.4%)	20 (2.6 %)	16 (5.6 %)	p=0.019
47. Nausea	33 (3.1%)	21 (2.8 %)	12 (4.2 %)	p=0.165
48. Anaemia	28 (2.7%)	18 (2.4 %)	10 (3.5 %)	p=0.214

49. Painful / sensitive scalp	28 (2.7%)	14 (1.8 %)	14 (4.9 %)	P=0.008
50. Mouth ulcers / ulcers	28 (2.7%)	13 (1.7 %)	15 (5.2 %)	p=0.003
51. Diarrhoea / constipation	24 (2.3%)	14 (1.8 %)	10 (3.5 %)	p=0.092
52. Sore throat	23 (2.2)	15 (2.0 %)	8 (2.8 %)	p=0.279
53. Prolonged fever	21 (2%)	16 (2.1 %)	5 (1.7 %)	p=0.463
54. Unusually low body temperature	18 (1.7%)	14 (1.8 %)	4 (1.4 %)	p=0.423
55. Low blood pressure	18 (1.7%)	11 (1.4 %)	7 (2.4 %)	p=0.199
56. Inflammations/infections in other organs	16 (1.5%)	6 (0.8 %)	10 (3.5 %)	P=0.003
57. Inflammation in the eyes / barley	13 (1.2%)	9 (1.2 %)	4 (1.4 %)	p=0.497
58. Chills without fever	11 (1%)	7 (0.9 %)	4 (1.4 %)	p=0.355
59. Fever / chills	10 (1%)	8 (1 %)	2 (0.7 %)	p=0.453
60. Altered salivation	9 (0.9%)	5 (0.7 %)	4 (1.4 %)	p=0.213
61. Renal pain/difficulty urinating	8 (0.8%)	7 (0.9 %)	1 (0.3 %)	p=0.309
62. Vomiting	2 (0.2%)	2 (0.3 %)	0 (0 %)	p=0.526