

Article

Passive sampling and analysis of naphthalene in internal combustion engine exhaust with retracted SPME device and GC-MS

Nassiba Baimatova^{1,2}, Jacek A. Koziel^{1*}, Bulat Kenessov²

¹ Department of Agricultural and Biosystems Engineering, Iowa State University, Ames, IA, USA

² Center of Physical Chemical Methods of Research and Analysis, Faculty of Chemistry and Chemical Technology, al-Farabi Kazakh National University, Almaty, Kazakhstan

*Corresponding author: e-mail: koziel@iastate.edu, tel.: +1 515-294-4206, postal address: 4350 Elings Hall, Iowa State University, Ames, IA 50011, USA

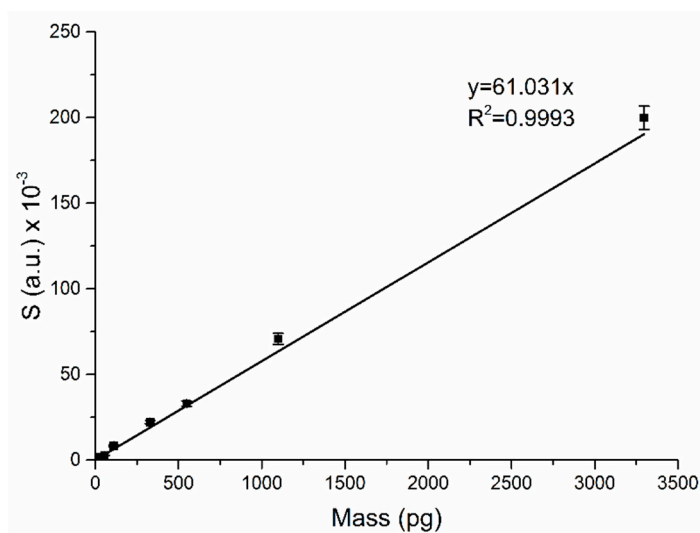


Figure S1: Calibration of MS detector for naphthalene

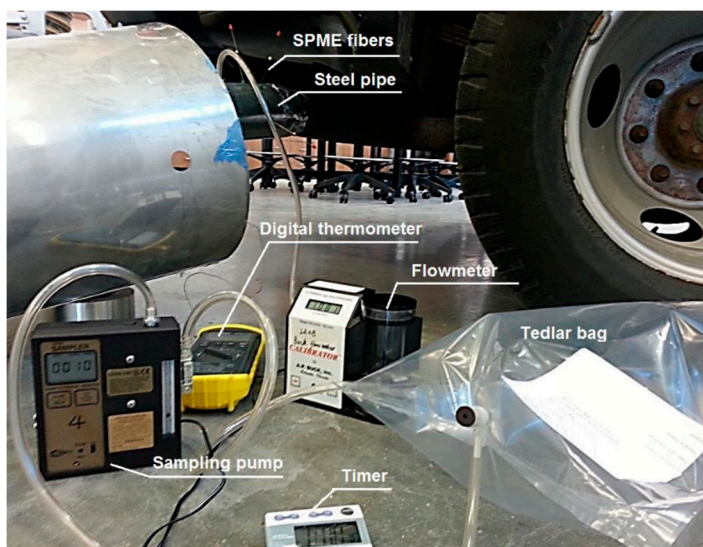


Figure S2: Side-by-side vehicle exhaust gas sampling using (a) passive sampling with retracted SPME fibers in triplicates and (b) dynamic sampling into a Tedlar bag