

Supplementary

# Prediction of the Concentration and Source Contributions of PM<sub>2.5</sub> and Gas-Phase Pollutants in an Urban Area with the SmartAQ Forecasting System

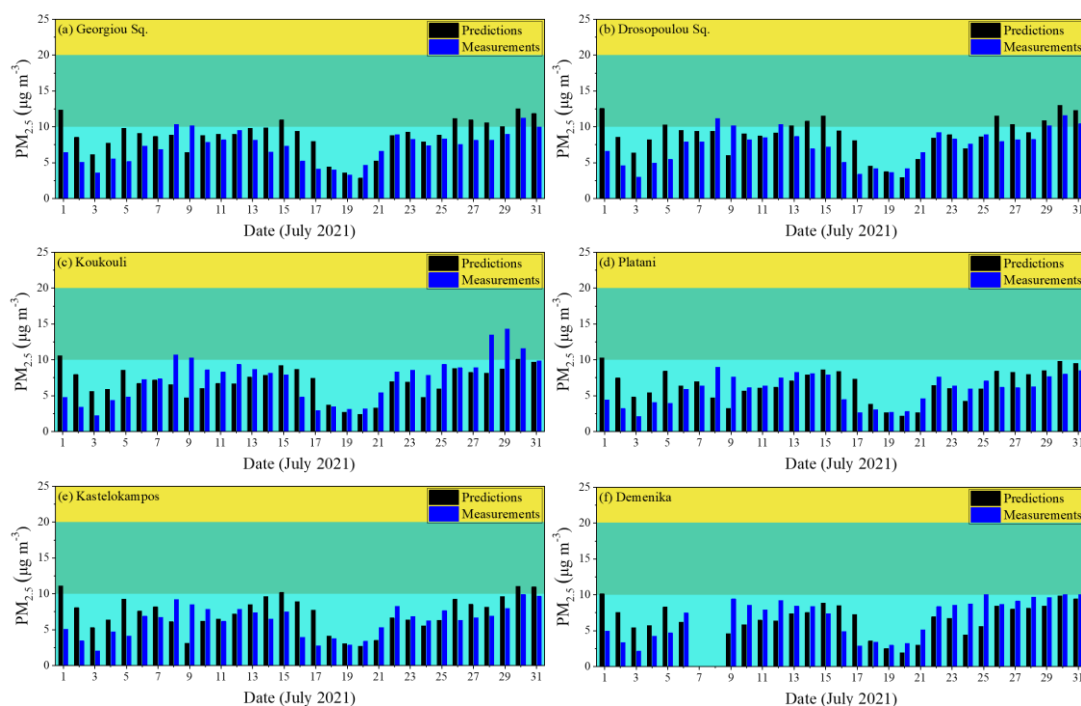
Evangelia Siouti<sup>1,2</sup>, Ksakousti Skyllakou<sup>2</sup>, Ioannis Kioutsoukis<sup>3</sup>, David Patoulas<sup>2</sup>, Ioannis D. Apostolopoulos<sup>2</sup>, George Fouskas<sup>2</sup> and Spyros N. Pandis<sup>1,2,\*</sup>

<sup>1</sup> Department of Chemical Engineering, University of Patras, Patras, Greece

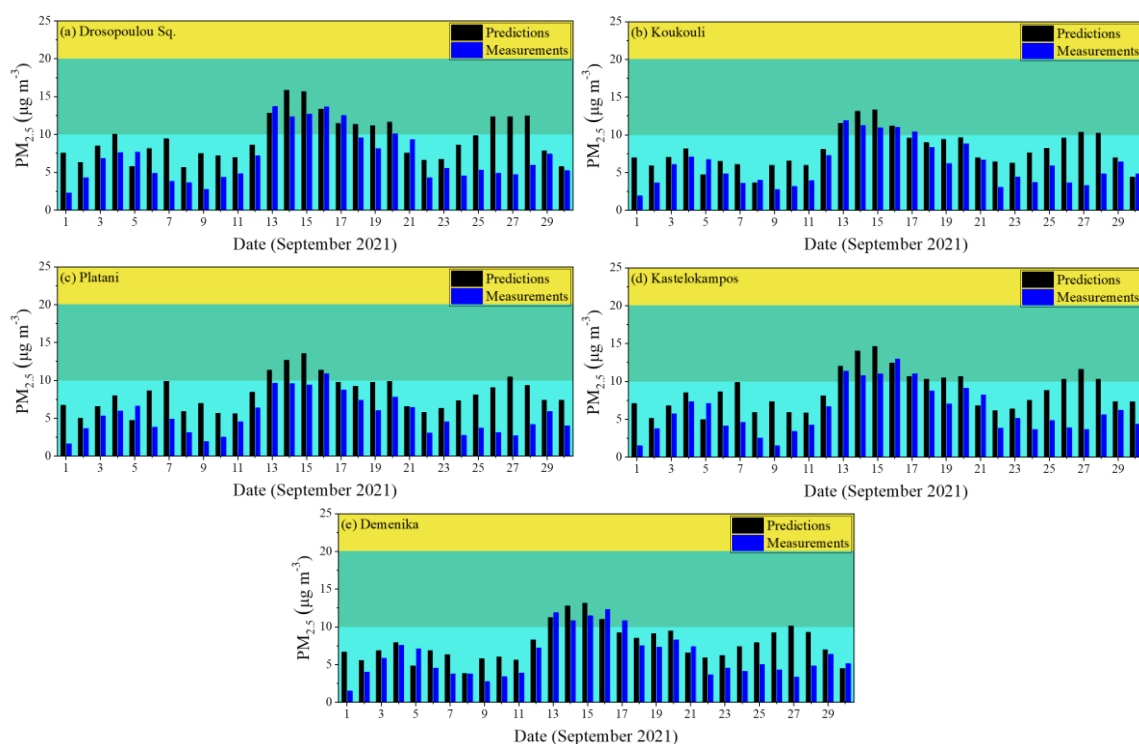
<sup>2</sup> Institute of Chemical Engineering Sciences (ICE-HT), Foundation for Research and Technology Hellas (FORTH), Patras, Greece

<sup>3</sup> Department of Physics, University of Patras, Patras, Greece

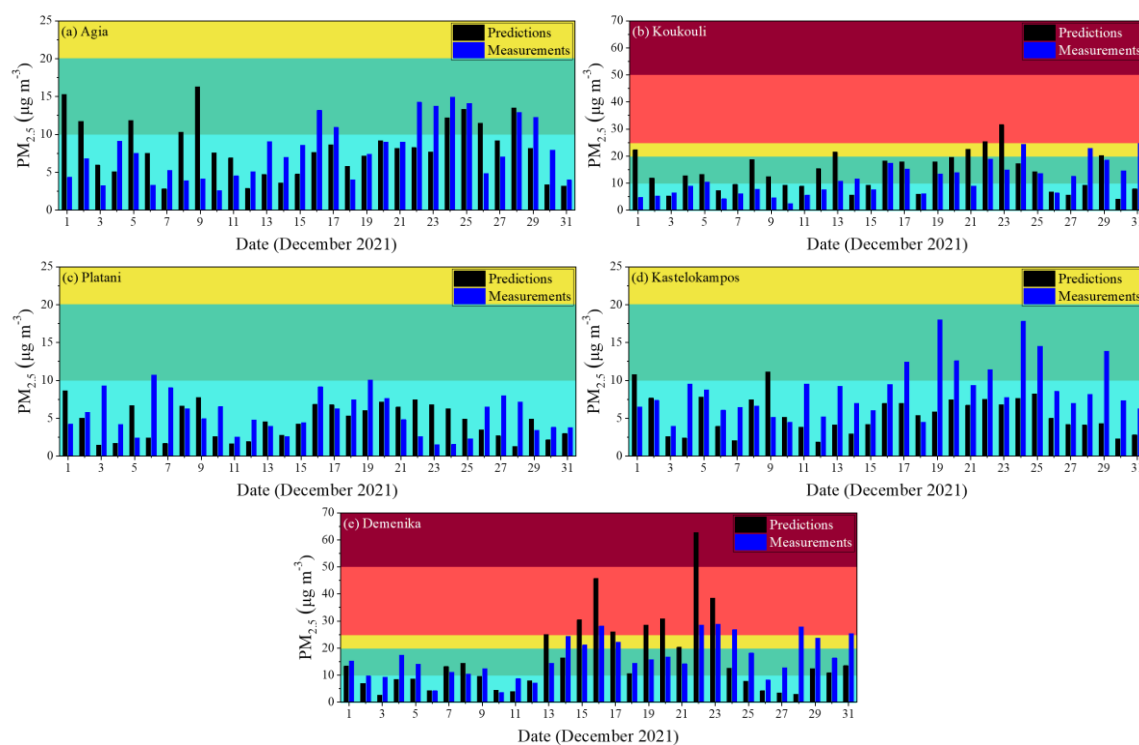
\* Correspondence: spyros@chemeng.upatras.gr



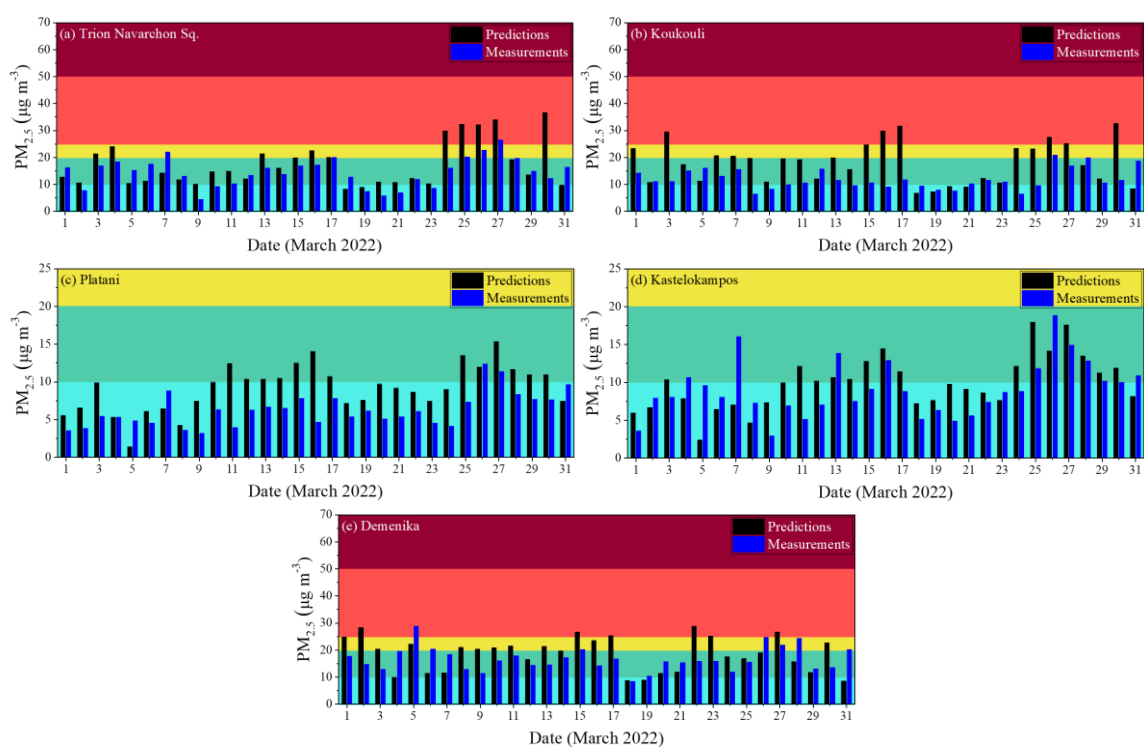
**Figure S1.** Daily average predicted and measured PM<sub>2.5</sub> concentrations ( $\mu\text{g m}^{-3}$ ) for (a) Georgiou Square, (b) Drosopoulou Square, (c) Koukouli, (d) Platani, (e) Kastelokampos and (f) Demenika during July 2021.



**Figure S2.** Daily average predicted and measured PM<sub>2.5</sub> concentrations (μg m<sup>-3</sup>) for (a) Drosopoulou Square, (b) Koukouli, (c) Platani, (d) Kastelokampos and (e) Demenika during September 2021.



**Figure S3.** Daily average predicted and measured PM<sub>2.5</sub> concentrations (μg m<sup>-3</sup>) for (a) Agia, (b) Koukouli, (c) Platani, (d) Kastelokampos and (e) Demenika during December 2021. Different scales are used.



**Figure S4.** Daily average predicted and measured  $PM_{2.5}$  concentrations ( $\mu g m^{-3}$ ) for (a) Trion Navarchon Square, (b) Koukouli, (c) Platani, (d) Kastelokampos and (e) Demenika during March 2022. Different scales are used.