

Supplementary Figure

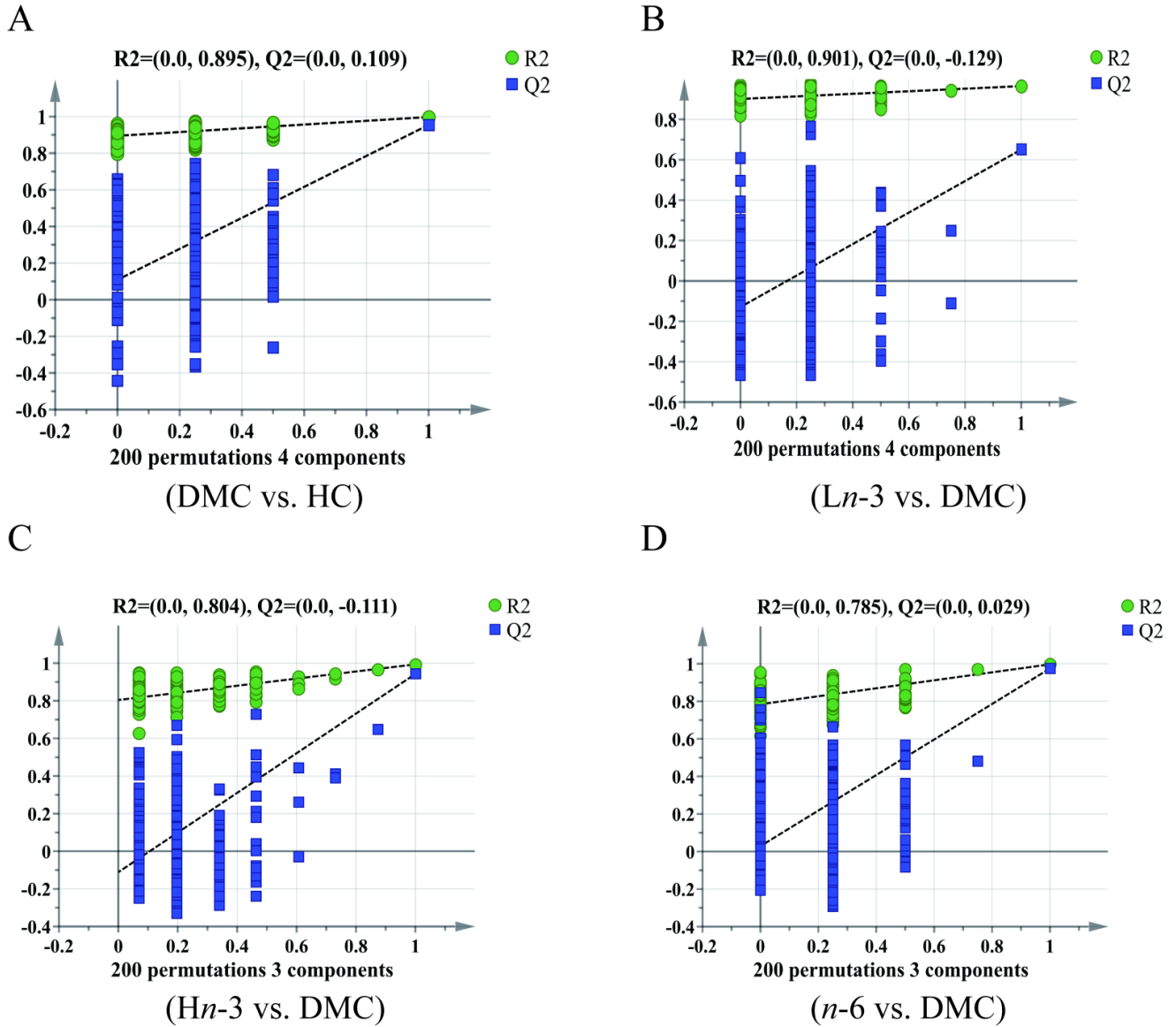


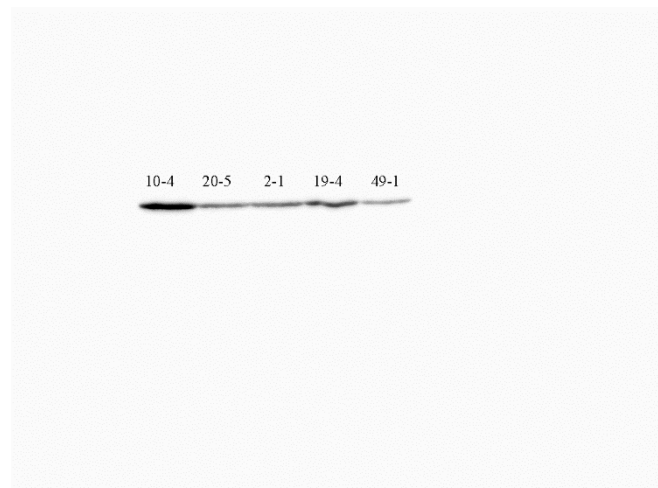
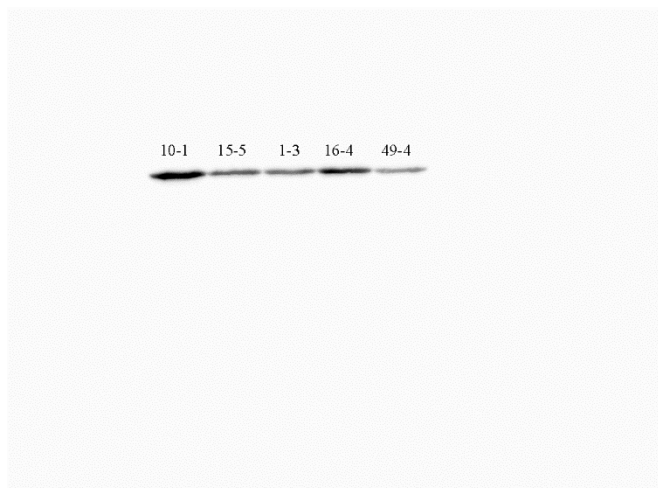
Figure S1. Permutation tests for pairwise PLS-DA between DMC and HC (A), $Ln-3$ (B), $Hn-3$ (C) and $n-6$ (D). All R^2Y and Q^2Y values were smaller than that in the actual model (generated by PLS-DA model). These results showed that the PLS-DA model had good predictive power without over-fitting. HC, healthy mice + normal diet (AIN-93G); DMC, diabetic mice + normal diet; $Ln-3$, diabetes + diet of low-dose $n-3$ PUFA; $Hn-3$, diabetes + diet of high-dose $n-3$ PUFA; $n-6$, diabetes + diet of $n-6$ PUFA.

Raw bands for western blotting analysis

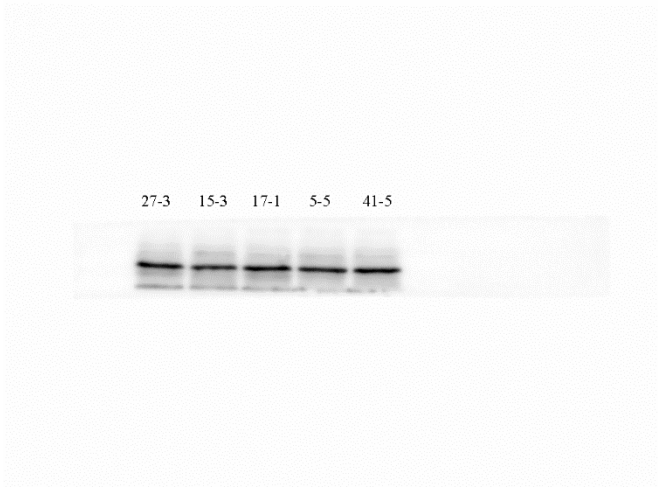
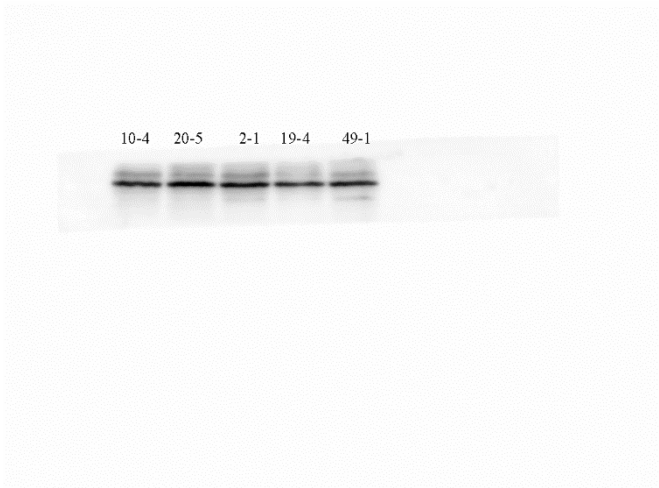
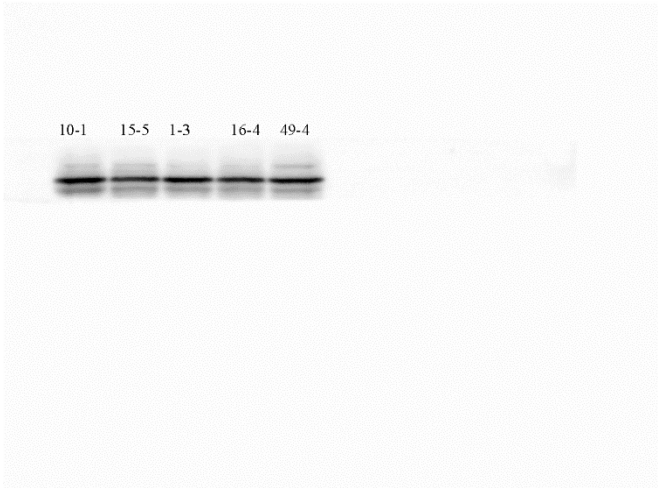
Group: HC, healthy mice + normal diet (AIN-93G); DMC, diabetic mice + normal diet; *Ln-3*, diabetes + diet of low-dose *n-3* PUFA; *Hn-3*, diabetes + diet of high-dose *n-3* PUFA; *n-6*, diabetes + diet of *n-6* PUFA

VEGF: 40 KDa; PGF: 25 KDa; IGF-1: 13 KDa; IGFBP3: 29 KDa and 46 KDa

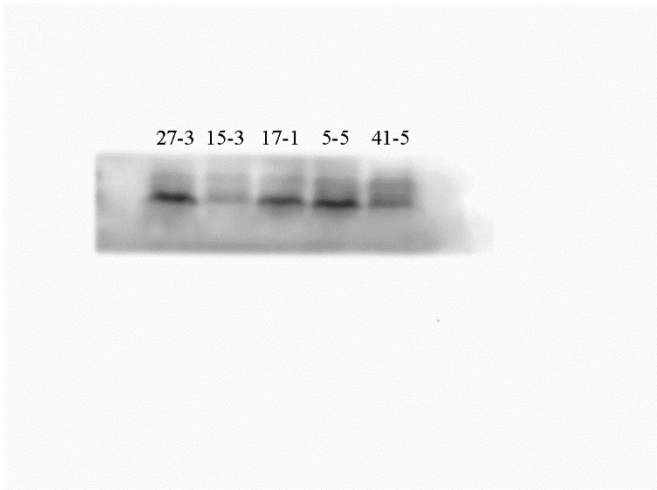
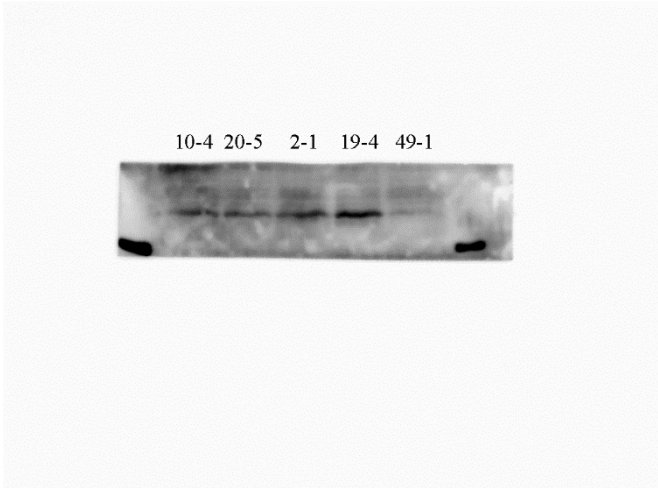
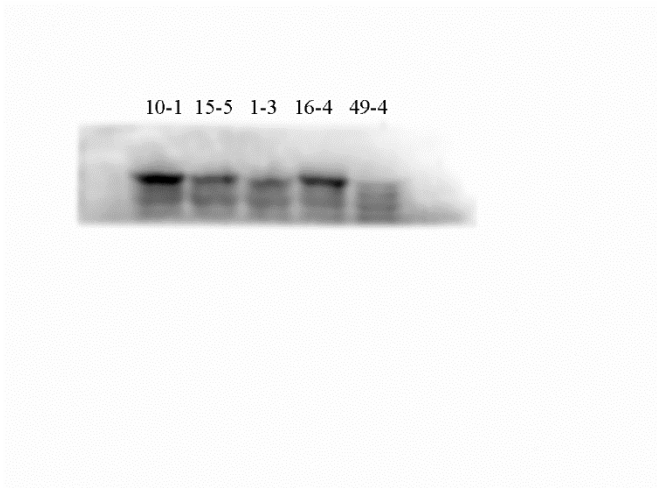
VEGF



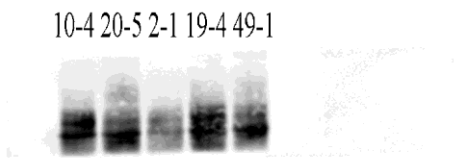
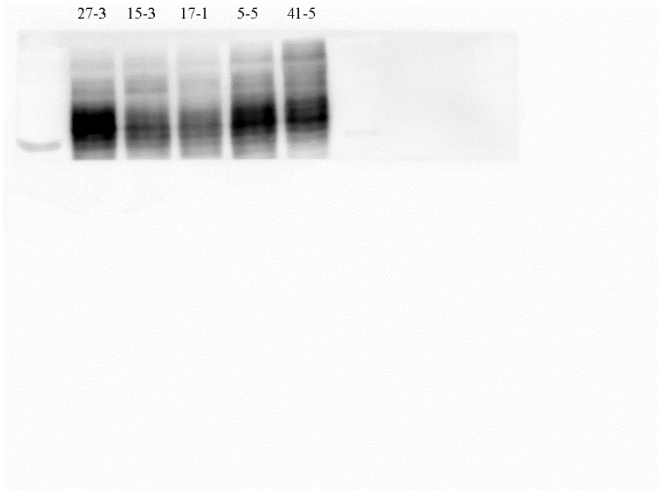
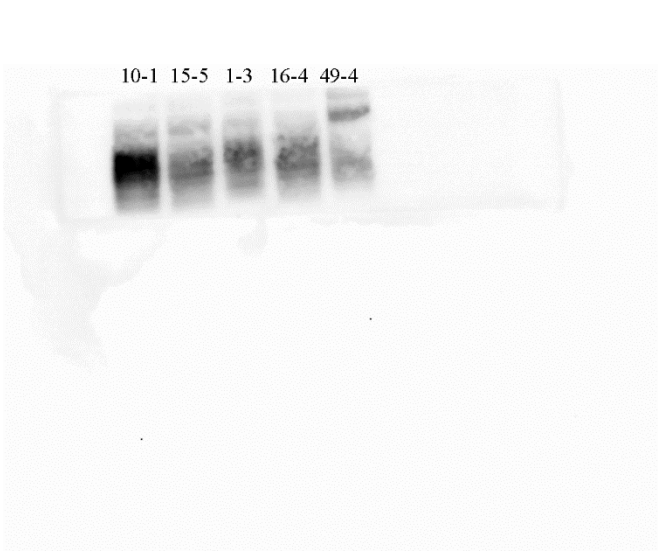
PGF



IGF-1



IGFBP3



β-actin

