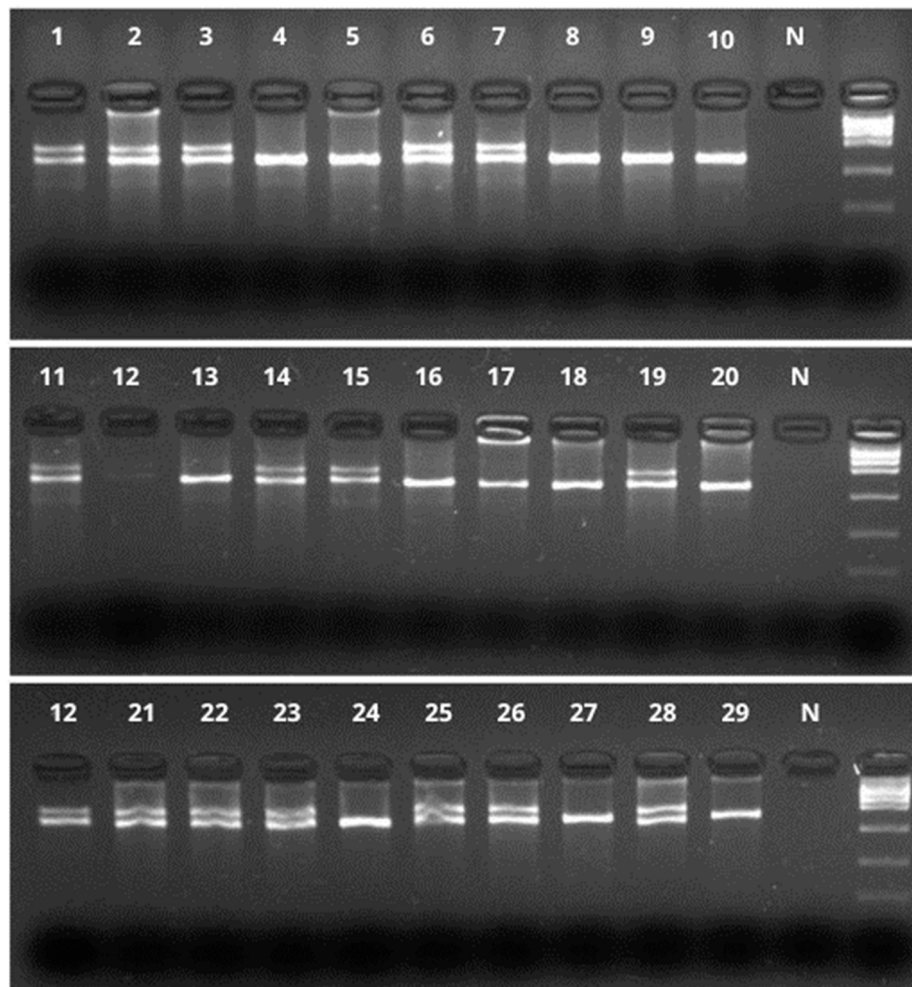


Supplementary Material for the article “Plumage Variation and Sex Ratio in the Brown-Backed Parrotlet (*Touit melanonotus*; Psittacidae)”

Figure S1 Results of PCRs performed with 29 individuals of *Touit melanonotus*.



Legend According to Han et al. [28], on electrophoretic gels all females show an additional band amplified by P0 and P2, which is ~100 bp larger than the amplified band by P8 and P2. Males have only one band. The sample from individual #12 was sexed twice, due to the unclear result of the first sexing. Numbers represent individuals and “N” represents negative controls.

Table S1 Literature review about Psittaciformes sex ratio, focusing on Psittacidae.

Taxon name	Common name	IUCN category	Reference	Captive/wild	Method	Age	Female <i>n</i> =	Male <i>n</i> =	Male: female sex ratio	χ^2
<i>Ara ararauna</i>	Blue-and-yellow Macaw	LC	[31]	W	M	C/N	4	5	1.25:1	0.11
			[32]	C	M	A	13	10	0.769:1	0.39
<i>Ara chloropterus</i>	Red-and-green Macaw	LC	[31]	W	M	16C,1A	8	9	1.125:1	0.05
			[33]	C	M	-	7	5	0.714:1	0.33
<i>Ara macao</i>	Scarlet Macaw	LC	[34]	C	M	-	9	7	0.777:1	0.25
<i>Amazona aestiva</i>	Blue-fronted Parrot	NT	[35]	W	M	-	8	24	3:1	8.00
			[36]	W	M	A	88	114	1.29:1	3.34
			[37]	W	M	C	12	9	0.75:1	0.42
<i>Amazona auropalliata</i>	Yellow-naped Amazon	CR	[38]	W	M	N	38	39	1.026:1	0.03
<i>Amazona finschi</i>	Lilac-crowned Parrot	EN	[39]	W	M	N	33	33	1:1	0
<i>Amazona guildingi</i>	Saint Vincent Amazon	VU	[40]	C	M	-	38	37	0.97:1	0.03

<i>Amazona ochrocephala xantholaema</i>	Yellow-crowned Parrot	LC	[41]	-	M	-	11	8	0.727:1	0.47
<i>Amazona vittata</i>	Puerto Rican Parrot	CR	[42]	W	-	N	26	31	1.192:1	0.43
<i>Amazona vinacea</i>	Vinaceous-breasted Parrot	EN	[43]	C	-	A	8	5	0.625:1	0.69
<i>Anodorhynchus leari</i>	Lear's Macaw	EN	[44]	W	M	J, A	-	-	-	-
<i>Anodorhynchus hyacinthinus</i>	Hyacinth Macaw	VU	[45]	W	M	F	15	13	0.866:1	0.14
			[46]	W	M	N	-	-	~ 1:1	-
			[47]	C	M		15	14	0.933:1	0.03
			[48]	W	M	N	54	37	0.685:1	3.17
			[49]	W	M	F/N	54	51	0.944:1	0.08
<i>Eupsittula aurea</i>	Peach-fronted Parakeet	LC	[50]	C	-	-	24	16	0.666:1	1.6
<i>Forpus passerinus</i>	Green-rumped Parrotlet	LC	[51]	W	O	A	442	671	1.518:1	47.11
			[52]	W	O	C, A	939	1656	1.763:1	198.10
			[53]	W	O	N	1341	1387	1.03:1	0.78
			[54]	W	O	J	115	214	1.860:1	29.79
<i>Psittacara leucophthalmus</i>	White-eyed Parakeet	LC	[43]	C	-	A	9	3	0.333:1	3

<i>Psittacus erithacus</i>	Gray Parrot	EN	[55]	23W, 4C	-	A	13	14	1.076:1	0.03
				W	-	A	16	8	0.5:1	2.66
			[56]	C	-	A	15	18	1.2:1	0.27
<i>Poicephalus robustus</i>	Cape Parrot	VU	[57]	C	O, M, L	A	2	2	1:1	0
<i>Poicephalus cryptoxanthus</i>	Brown-headed Parrot	LC					3	4	1.333:1	0.14
<i>Poicephalus meyeri</i>	Meyer's Parrot	LC					4	6	1.5:1	0.4
<i>Poicephalus rufiventris</i>	Orange-bellied Parrot	LC					3	3	1:1	0
<i>Poicephalus senegalus</i>	Senegal Parrot	LC					5	4	0.8:1	0.11
<i>Poicephalus gulielmi</i>	Red-fronted Parrot	LC					2	2	1:1	0
<i>Primolius couloni</i>	Blue-headed Macaw	VU	[58]	C	M	-	4	35	8.75:1	24.64
<i>Myiopsitta monachus</i>	Monk Parakeet	LC	[59]	W	L	A	36	32	0.888:1	0.26
			[60]	W	M	A	30	30	1:1	0
				W	M	N	27	23	0.851:1	0.32

Legend In “Captive/Wild”: **W** = wild; **C** = captive. In “Method”: **M** = molecular; **O** = observational; **L** = laparotomy; In “Age”: **C** = chicks; **N** = nestlings; **F** = fledglings; **A** = adults. IUCN categories: **LC** - Least Concern; **NT**: Near Threatened; **VU**: Vulnerable; **EN**: Endangered; **CR**: Critically Endangered. “-” = data not available. Bold χ^2 numbers are the ones with significant deviations from equality. This table was inspired by the one published by Taylor & Parkin [54], and we excluded the data already provided by the authors. Note that some studies contain more than one estimate.