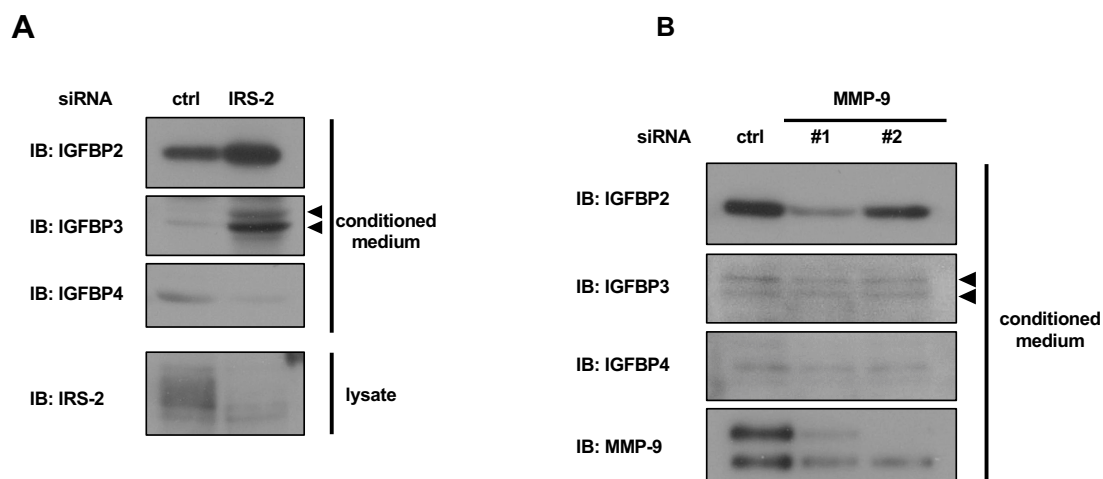
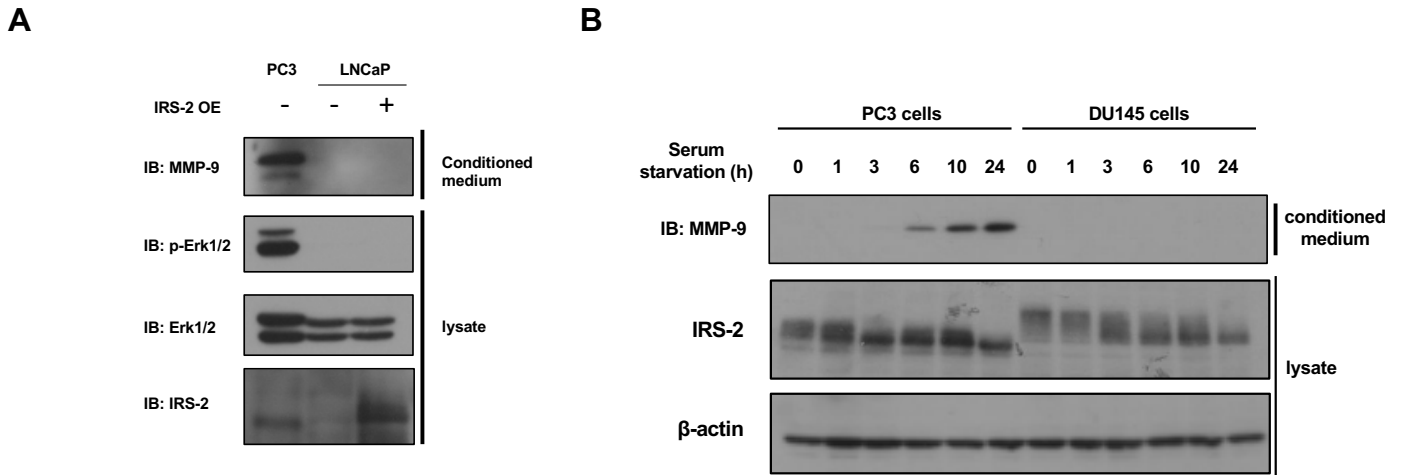


**Supplementary Figure S1. Analysis of IGF-I mRNA level**  
PC3 cells are transfected with siRNA against scramble (ctrl) or IRS-2. The *Igf1* mRNA level was then examined by real-time PCR analysis. Bar graphs are presented as fold-change of columns on the left (ctrl). Bar: mean  $\pm$  S.E.M.,  $p = 0.0022$ ,  $n=3$ , Student's  $t$ -test.



**Supplementary Figure S2. Analysis of IGFBPs protein level in the conditioned medium**

**(A):** PC3 cells are transfected with siRNA against scramble (ctrl) or IRS-2. Each cell was cultured in the serum-free medium and conditioned medium was collected. Conditioned medium was subjected to the immunoblotting analysis with indicated antibodies. **(B):** PC3 cells are transfected with siRNA against scramble (ctrl) or MMP-9. Each cell was cultured in the serum-free medium for 24 hours and conditioned medium was collected. Conditioned medium was subjected to the immunoblotting analysis using indicated antibodies.



**Supplementary Figure S3. MMP-9 secretion levels in some prostate cancer cells.**

LNCaP cells are transfected with mock (-) or IRS-2 expressing plasmids (+). PC3 or LNCaP cells were serum-starved for 24 h. Cell lysates or conditioned medium was subjected to immunoblotting using the indicated antibodies. DU145 prostate cancer cells were serum-starved for 24 h. Cell lysates or conditioned medium was subjected to immunoblotting analysis using the indicated antibodies.