

Supplementary Materials

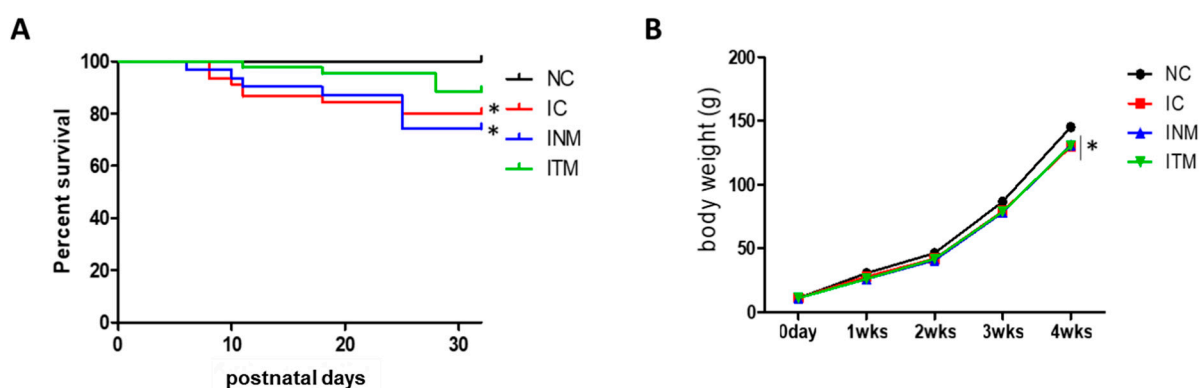


Figure S1. (A) Survival rate and (B) body weight growth curve {initial number of animals (- the number of dead animals) = 18 (-0), 36 (-7), 31 (-8), 32 (-4) in the NC group, IC group, INM group and ITM group, respectively}. The measured values are expressed as mean \pm SEM. * $p < 0.05$ versus NC. NC, normal control; IC, IVH control; INM, IVH with transplantation of naïve MSCs; ITM, IVH with transplantation of thrombin preconditioned MSCs.

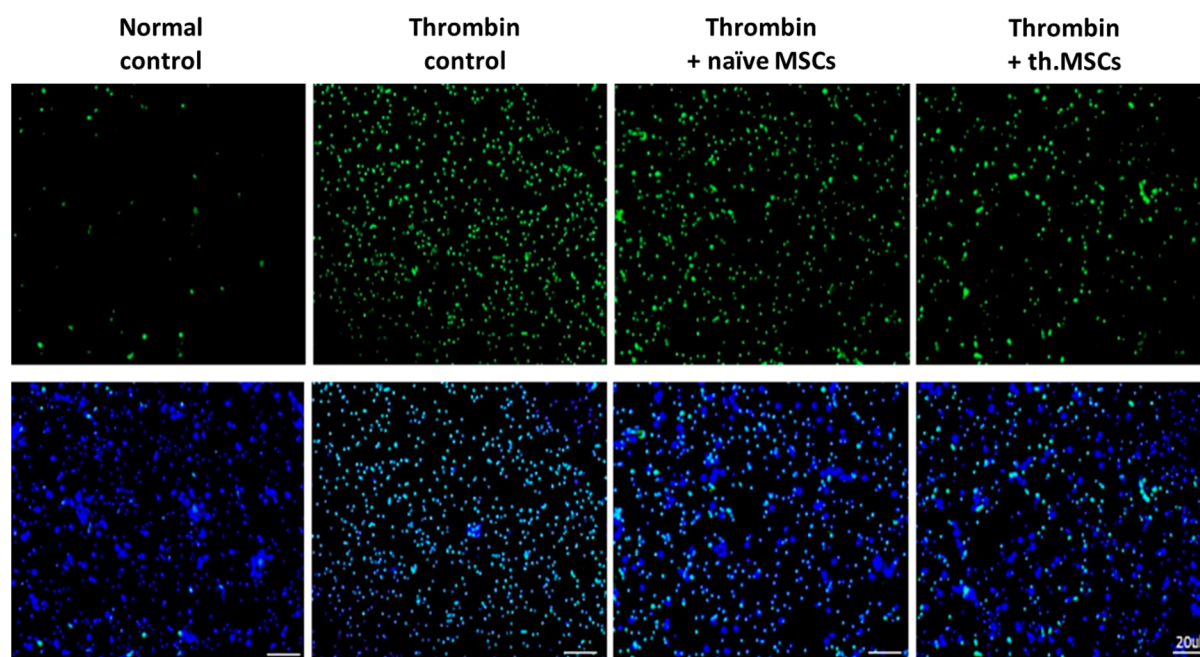


Figure S2. Enlarged images shown in Figure 1D.