

Light Triggers the Antiproliferative Activity of Naphthalimide-Conjugated (η^6 -arene)ruthenium(II) Complexes

Franco Bisceglie ^{1,2,*}, Giorgio Pelosi ^{1,2}, Nicolò Orsoni ¹, Marianna Pioli ¹, Mauro Carcelli ¹, Paolo Pelagatti ¹, Silvana Pinelli ³ and Peter J. Sadler ⁴

Table S1. Chemical shift of the methylene group in the complexes and their ligands.

	C	L
C1/L1	5.16 ppm	5.32 ppm
C2/L2	5.17 ppm	5.30 ppm
C3/L4	5.13 ppm	5.27 ppm

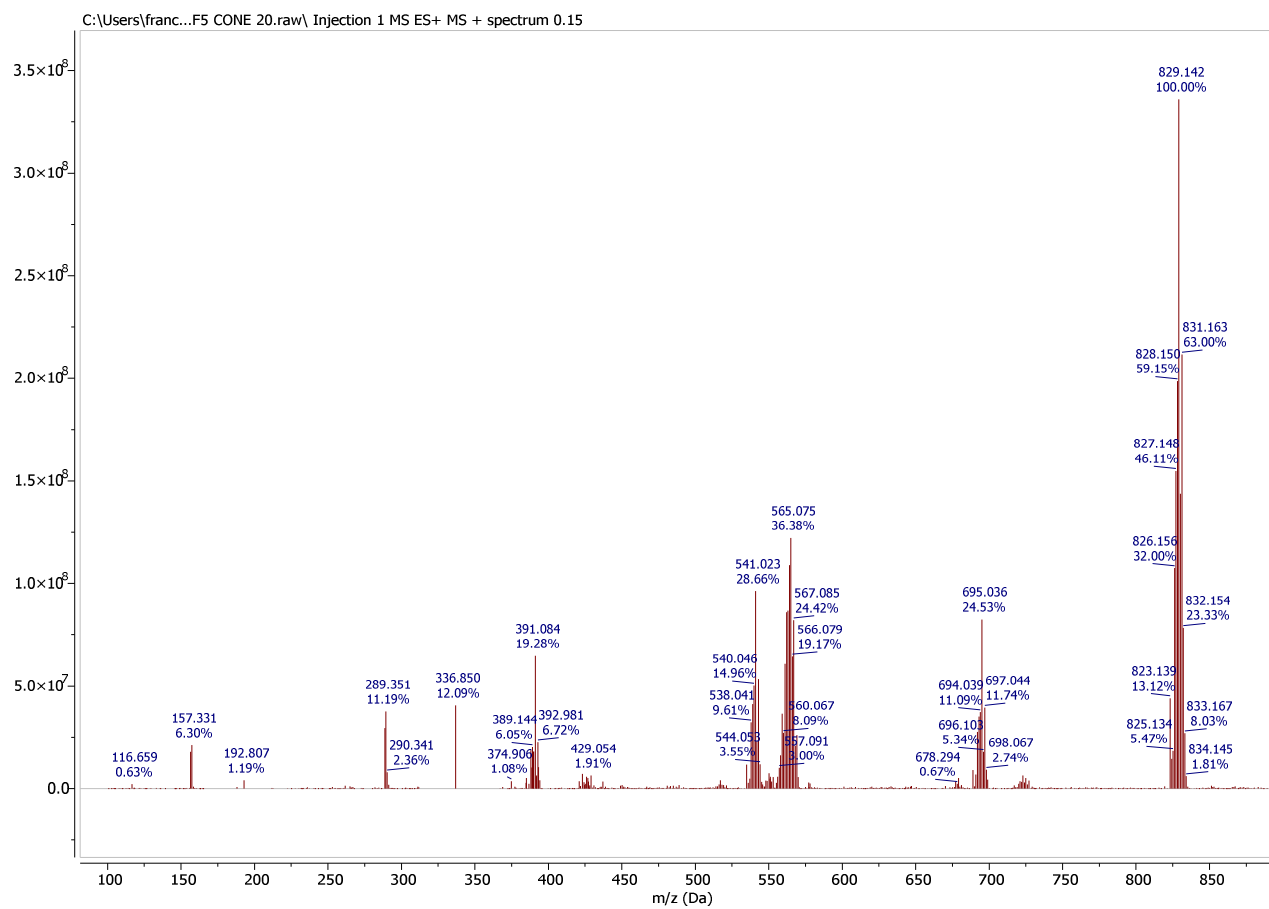


Figure S1. Full ESI mass spectrum of compound C1.

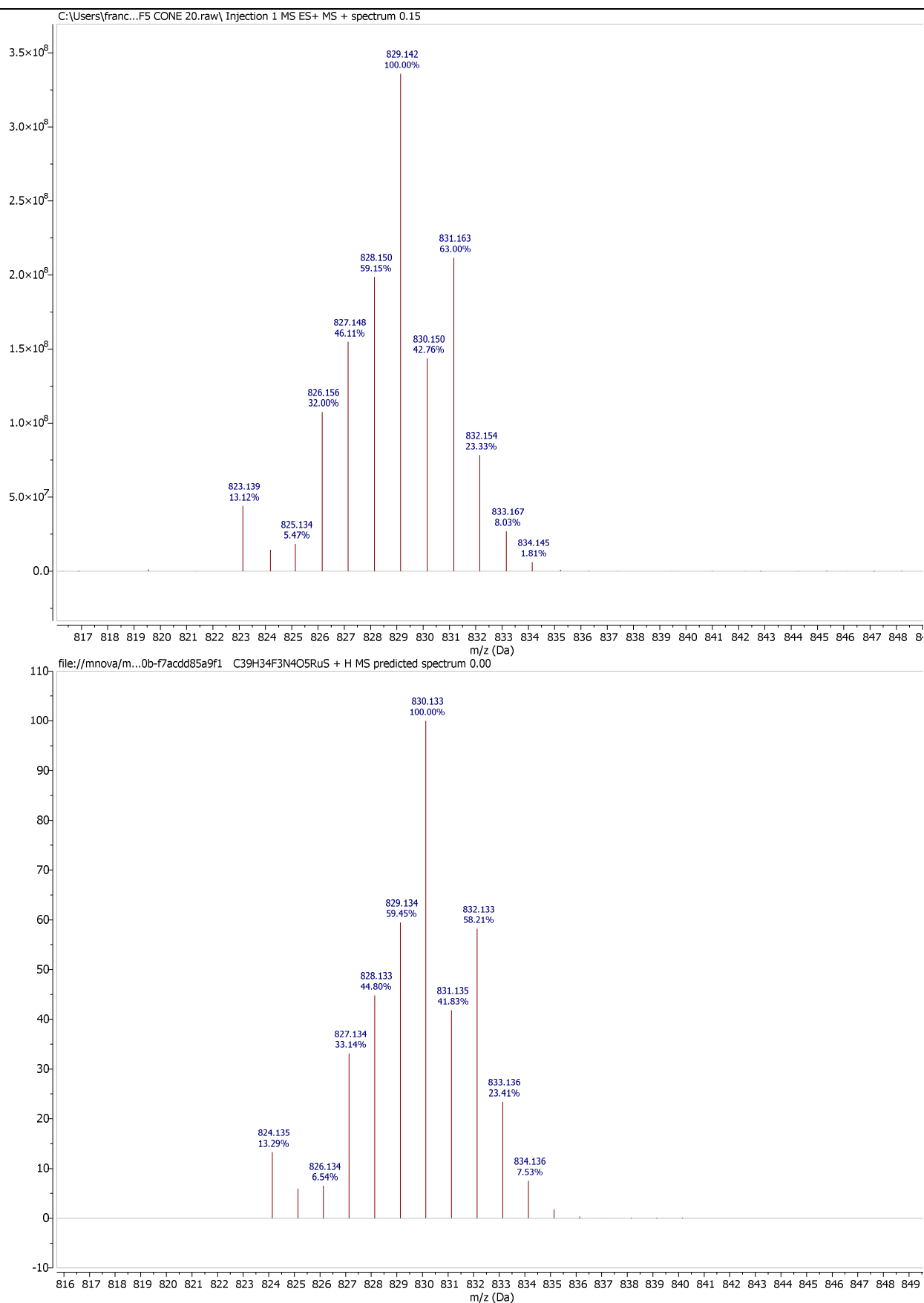


Figure S2. Comparison of the experimental (above) and calculated (below) isotope patterns for key ESI-MS signals for compound C1.

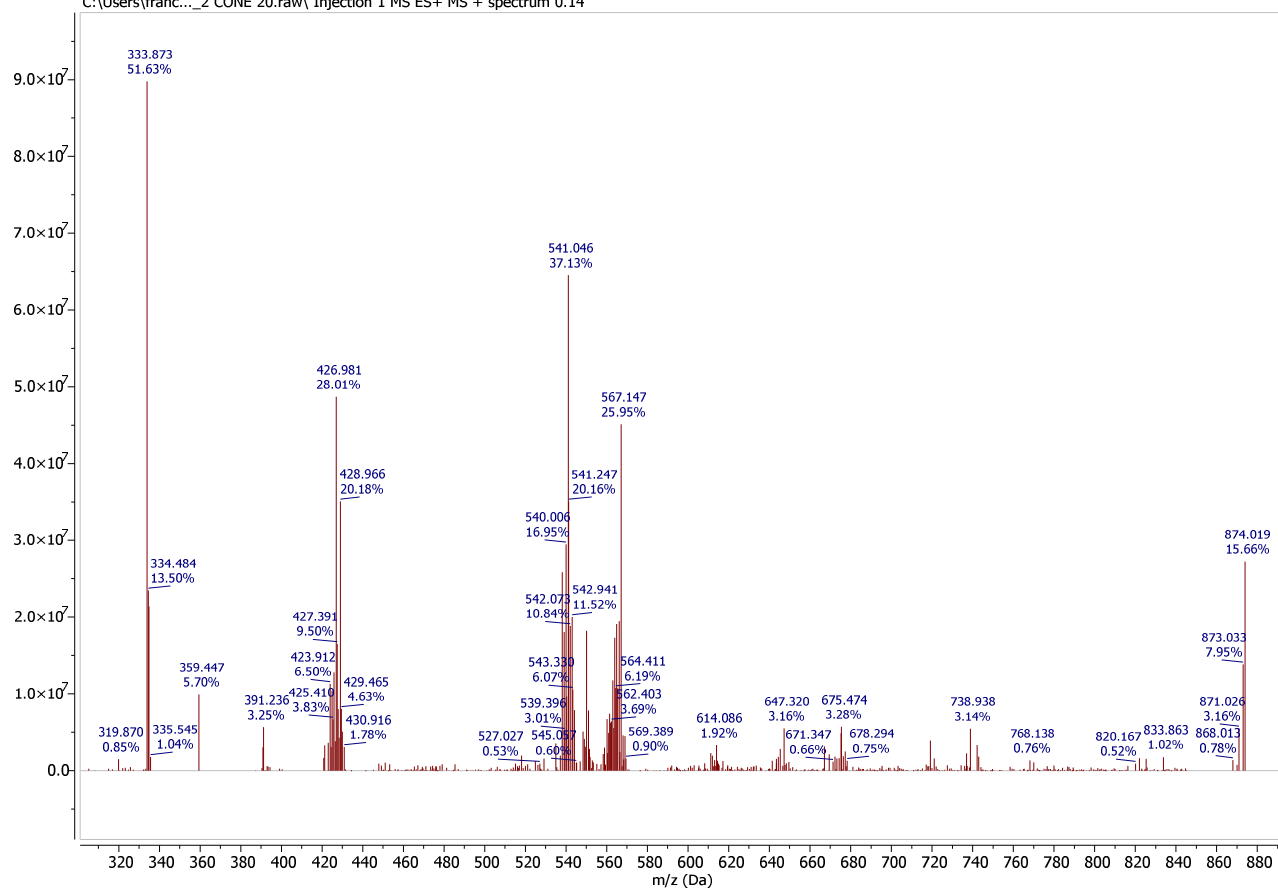


Figure S3. Full ESI mass spectrum of compound C2.

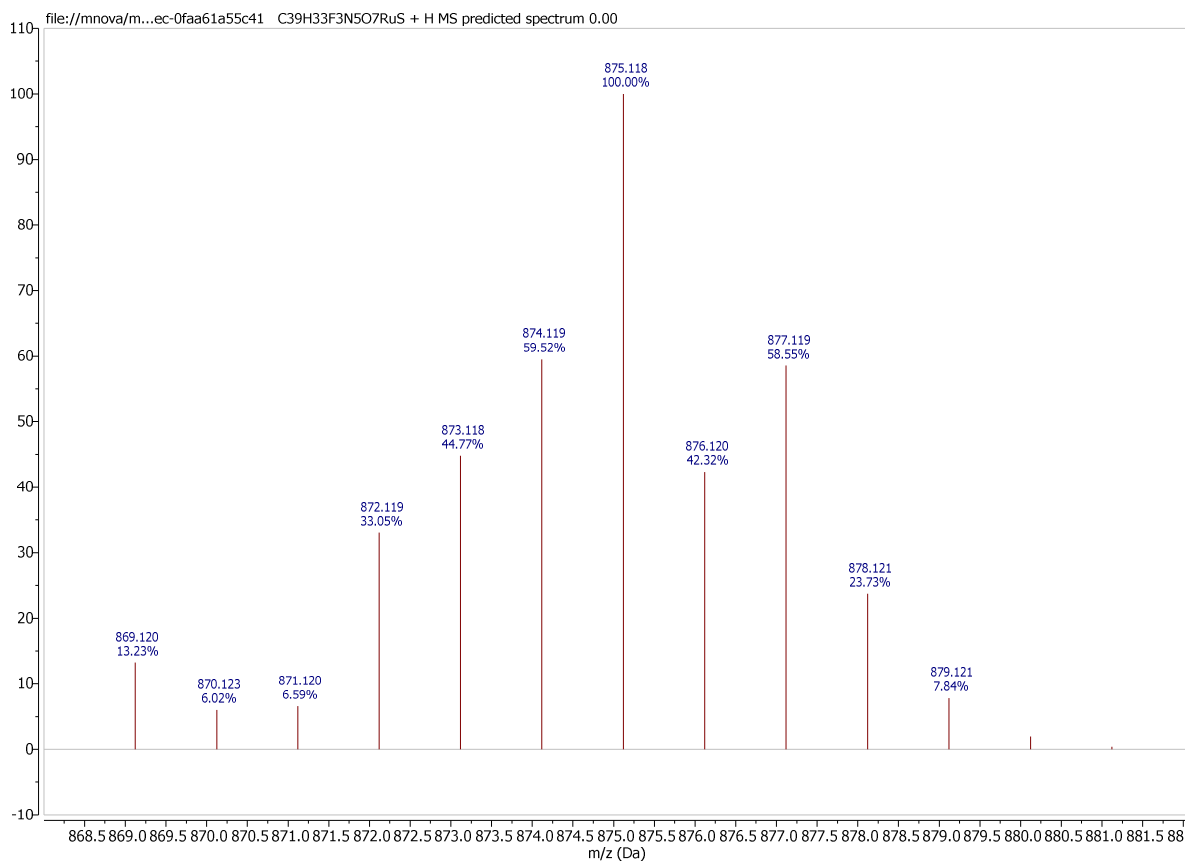
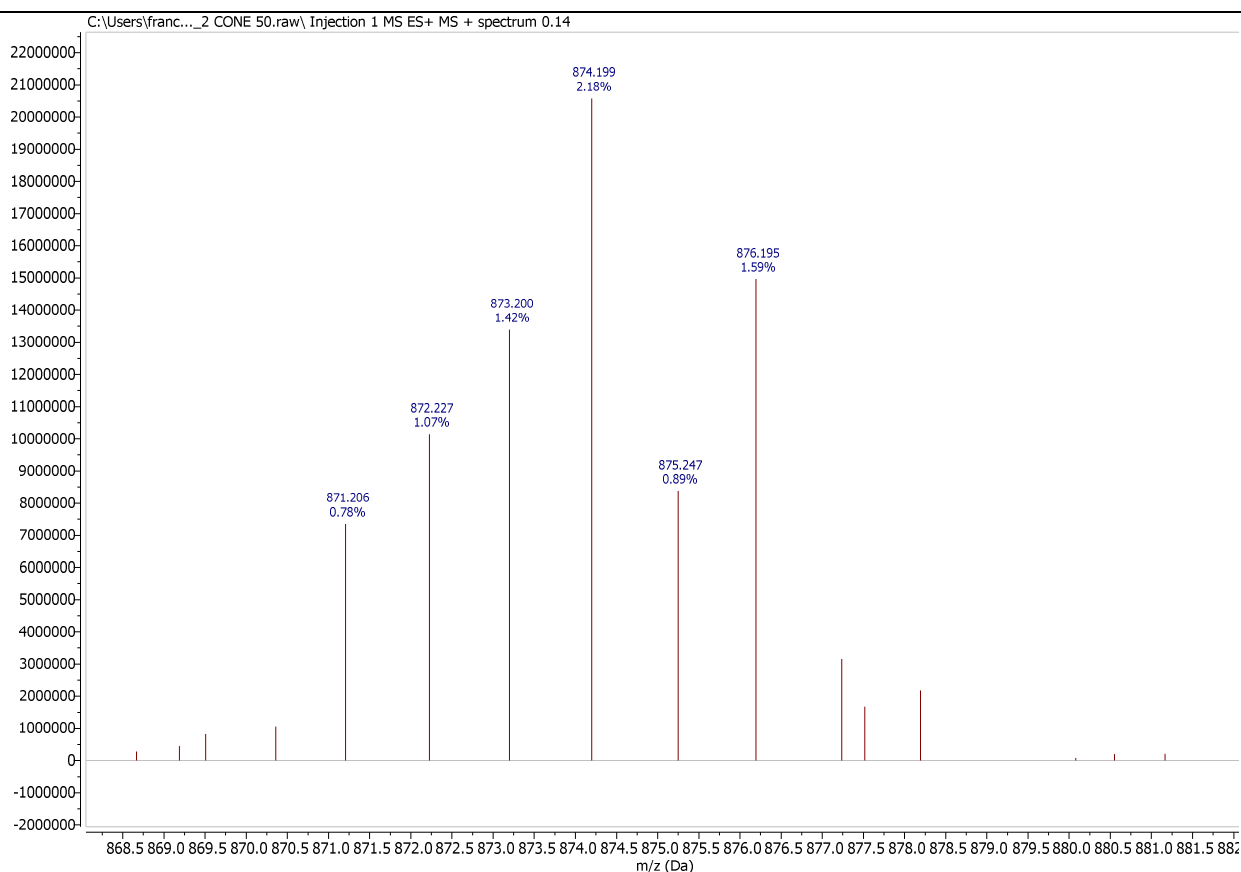


Figure S4. Comparison of the experimental (above) and calculated (below) isotope patterns for key ESI-MS signals for compound C2.

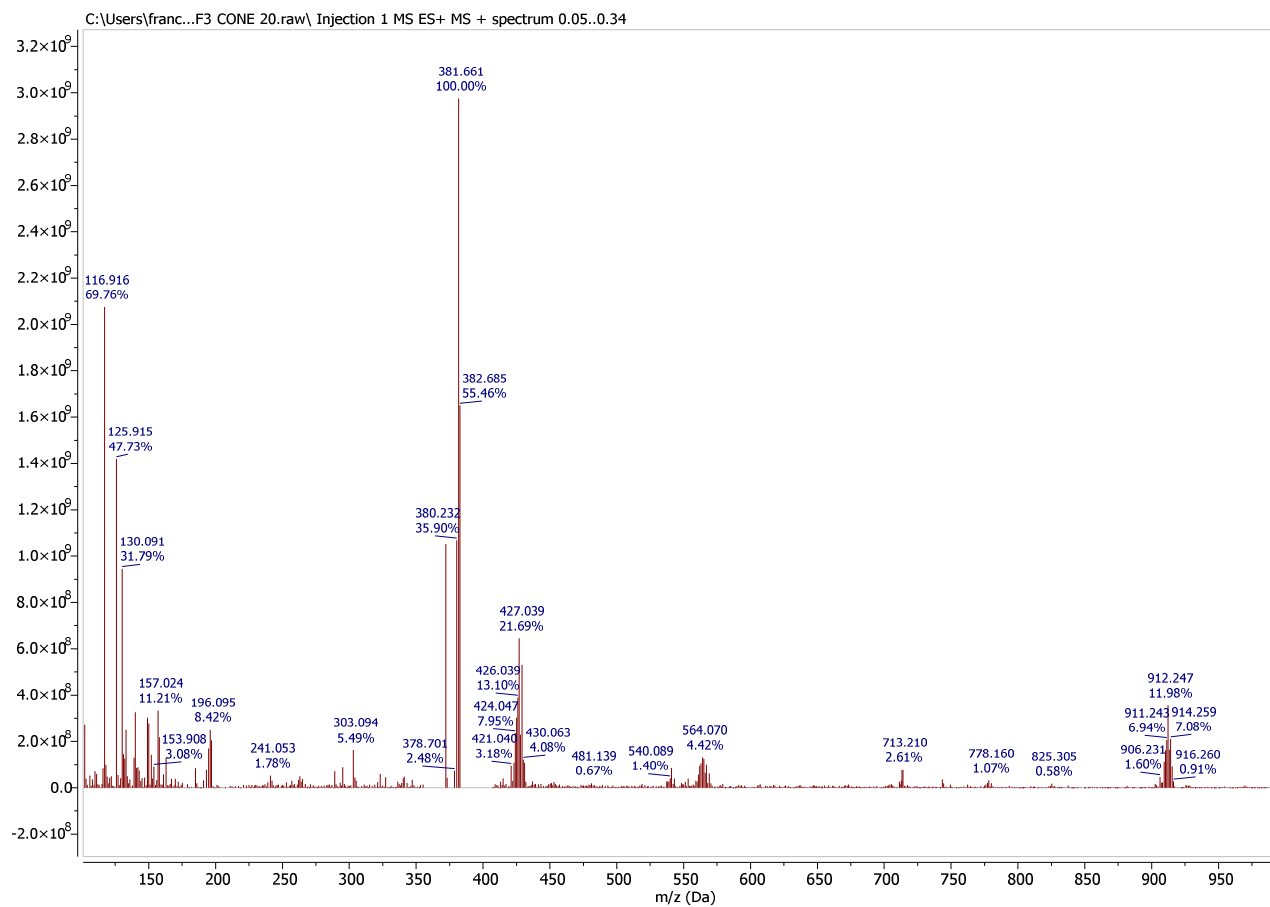
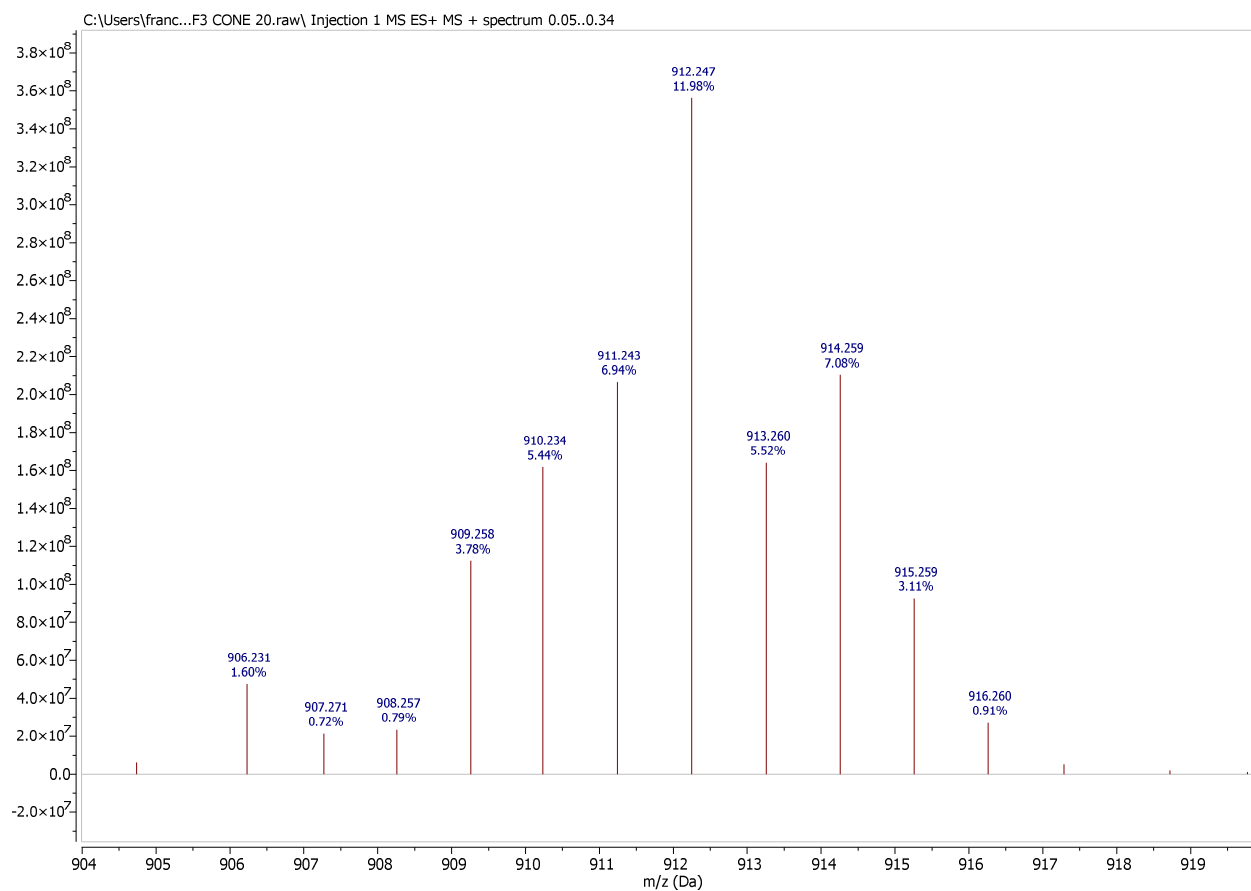


Figure S5. Full ESI mass spectrum of compound C3.



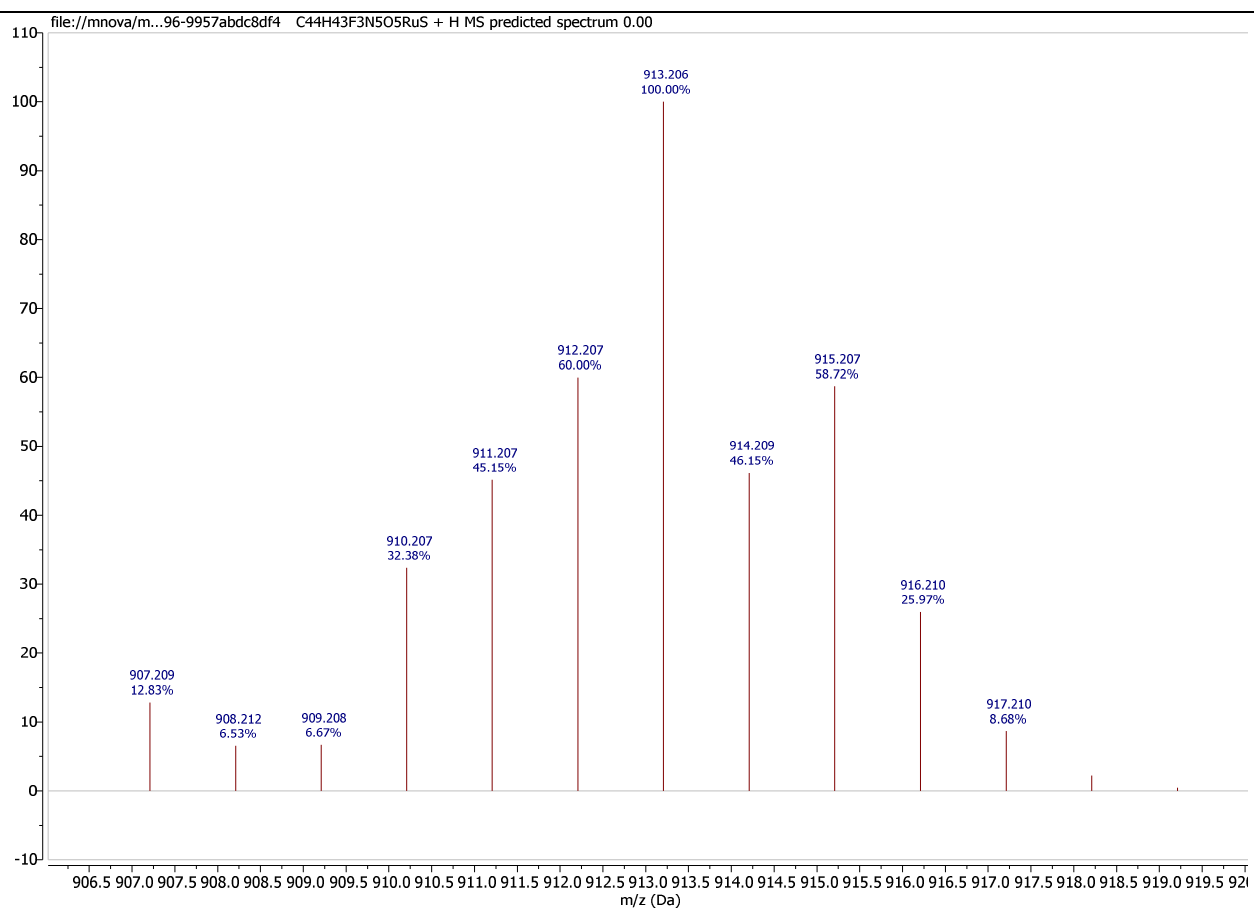


Figure S6. Comparison of the experimental (above) and calculated (below) isotope patterns for key ESI-MS signals for compound C3.

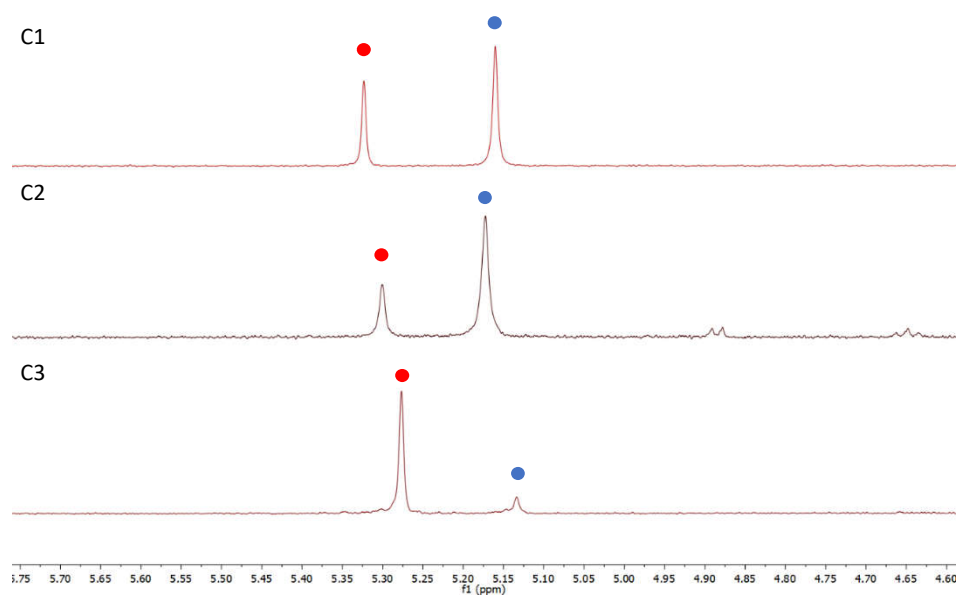


Figure S7. Comparison of the naphthalimide release in C1, C2 and C3 after 3 hours of irradiation.