

Article

Bone Fracture-Treatment Method: Fixing 3D-Printed Polycaprolactone Scaffolds with Hydrogel Type Bone-Derived Extracellular Matrix and β -Tricalcium Phosphate as an Osteogenic Promoter

Seokhwan Yun ¹, Dami Choi ², Dong-Jin Choi ¹, Songwan Jin ^{1,2}, Won-Soo Yun ^{1,2,*}, Jung-Bo Huh ^{3,*} and Jin-Hyung Shim ^{1,2,*}

¹ Department of Mechanical Engineering, Korea Polytechnic University, Siheung-si 15073, Korea; yun-tobi@kpu.ac.kr (S.Y.); seaottersarecute@protonmail.com (D.-J.C.); songwan@kpu.ac.kr (S.J.)

² Research Institute, T&R Biofab Co., Ltd., Siheung-si 15073, Korea; choidm@tnrbiofab.com

³ Department of Prosthodontics, Dental Research Institute, Dental and Life Sciences Institute, School of Dentistry, Pusan National University, Yangsan-si 50612, Korea

* Correspondence: wsyun@kpu.ac.kr (W.-S.Y.); neoplasia96@daum.net (J.-B.H.); happyshim@kpu.ac.kr (J.-H.S.); Tel.: +82-31-8041-1819 (W.-S.Y.); +82-55-360-5146 (J.B.H.); +82-31-8041-1819 (J.-H.S.)

† Co-corresponding authors contributed equally to this work.

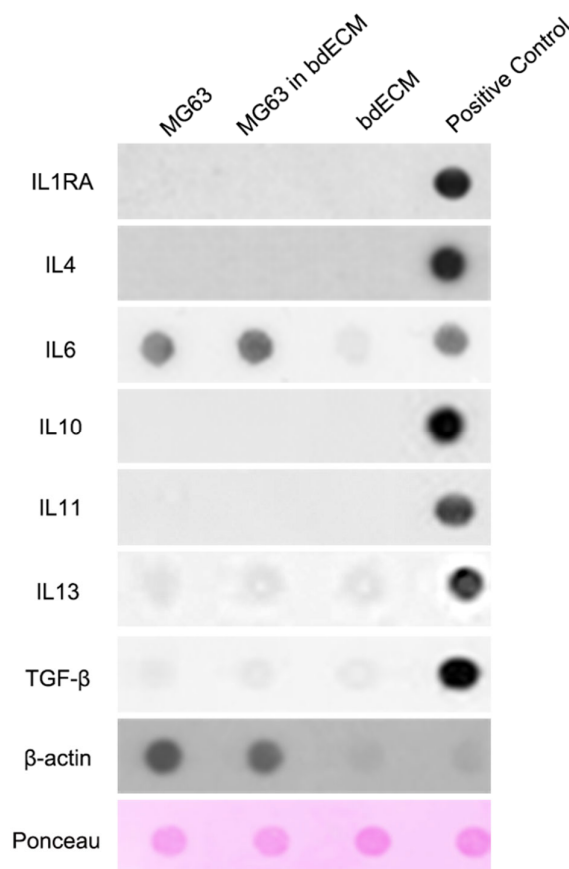


Figure S1. Expression of anti-inflammatory cytokines. IL1RA, IL4, IL6, IL10, IL11, IL13, TGF- β were immune blotted. Only IL-6 was detected in MG63 and MG63 in bdECM group and bdECM showed no IL6.

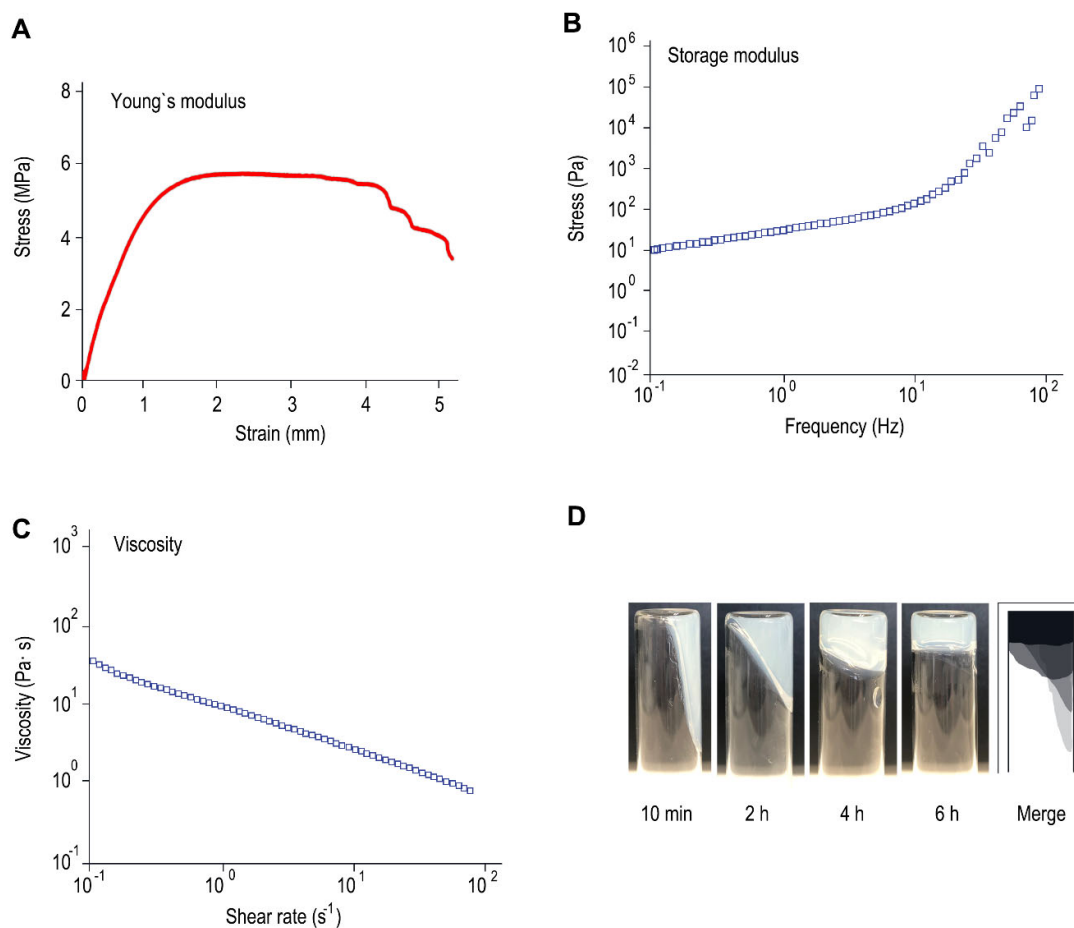


Figure S2. Mechanical properties of PCL and bdECM. (A) Young's modulus test of PCL scaffold. (B) Storage modulus versus frequency graph of bdECM. (C) Stress-strain curve of PCL. (D) Flow by gravity showed viscosity of bdECM.

Table S1. Antibodies used for western blotting and immunohistochemistry.

Target protein	Host	Manufacturer	Domicilli
β -catenin	Rabbit	Cell Signaling	Danvers, MA, USA
p- β -catenin	Rabbit		
Smad	Rabbit		
p-Smad1/5	Rabbit		
Caspase-3	Rabbit		
IL-6	Rabbit		
β -actin	mouse	Sigma-Aldrich	St.Louis, MO, USA
Osteocalcin		Abcam	Cambridge, UK
MRP-14			