

Figure S1. XRD of pDNA@ZIF functionalized with 1000 μM of amino acids.

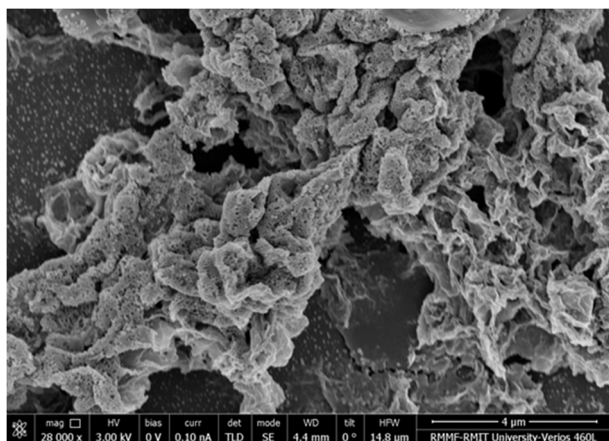


Figure S2. SEM images of ZIF-C.

Cytotoxicity: Approximately 7500 and 5000 cells/well PC-3 were seeded in 96 well plates for 72 h and 96 h treatment respectively. The cells were incubated for 24 h in humidified 5% CO₂ at 37°C incubator. The same experimental steps described in section 3.8 was followed to conduct cytotoxicity at 72 h and 96 h.

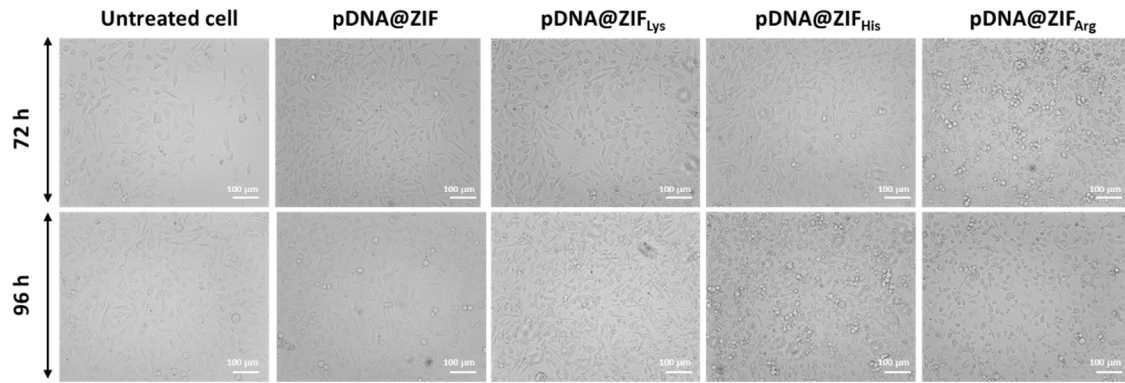


Figure S3. Phase contrast images of cells taken in phase contrast and fluorescence microscope.