

Supporting information

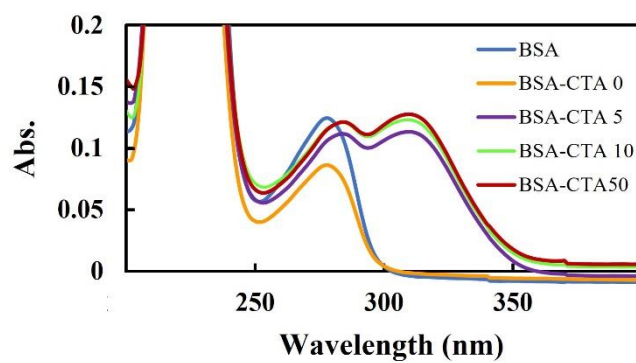
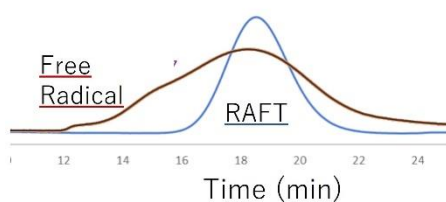
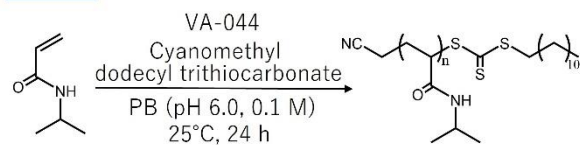


Figure S1. UV-vis measurement results of each BSA-CTA in water (1 mg/mL).

Table S1. Feeding ratio of BSA-PNIPAAm for the investigation of monomer concentration

Sample name	BSA [μmol]	NIPAAm [μmol]	VA-044 [μmol]	CTA [μmol]	C [mM]
BSA-CTA5-PNIPAm A	1	400	50	5	800
BSA-CTA5-PNIPAm B	1	400	50	5	400

RAFT

- Free Radical : Mn=153,000 | Mw/Mn=2.9
- RAFT : Mn=135,000 Mw/Mn=1.2

Figure S2. The GPC results of PNIPAAm with and without CTA.

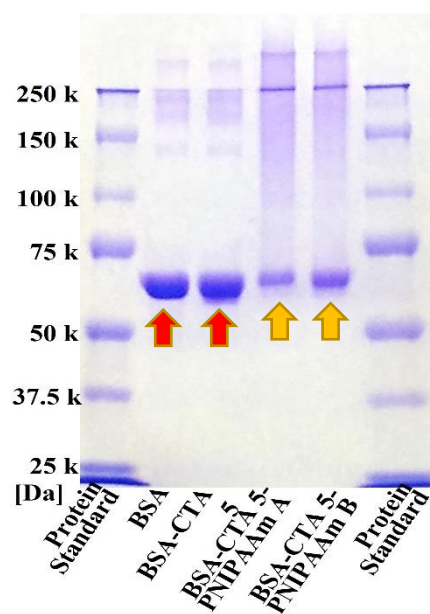


Figure S3. Monomer concentration of BSA-PNIPAAm conjugates observed through SDS-PAGE. (Red arrows, no band broadening while yellow arrows show band broadening after conjugation).

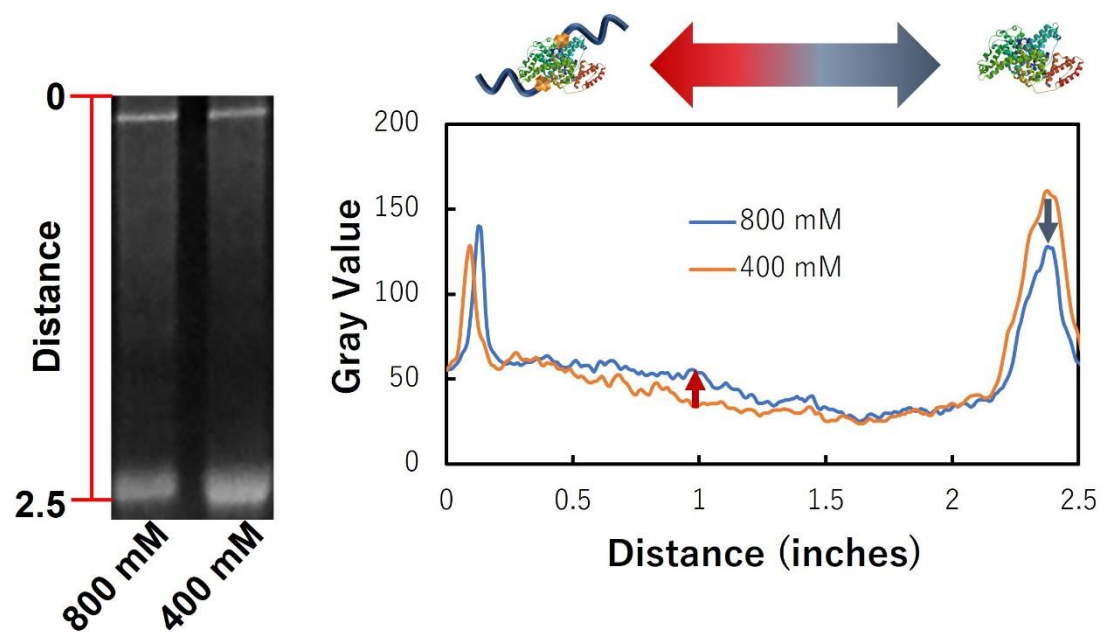


Figure S4. Gray value of the SDS-PAGE result calculated by image J. (The band on the high molecular weight side with 800 mM was more deep color).

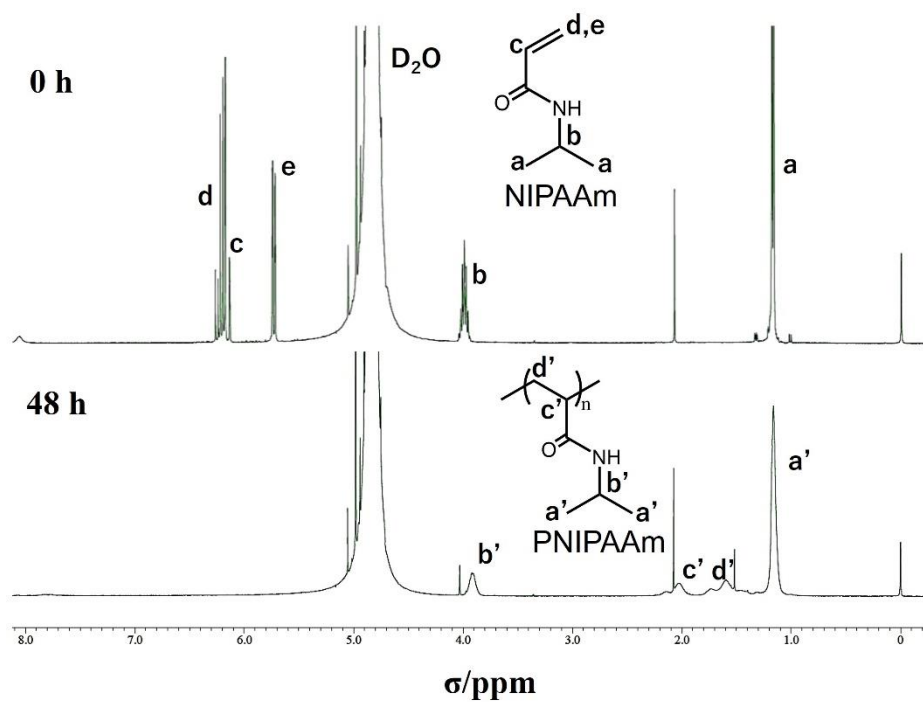


Figure S5. ^1H NMR spectrum of BSA-PNIPAAm in D_2O .

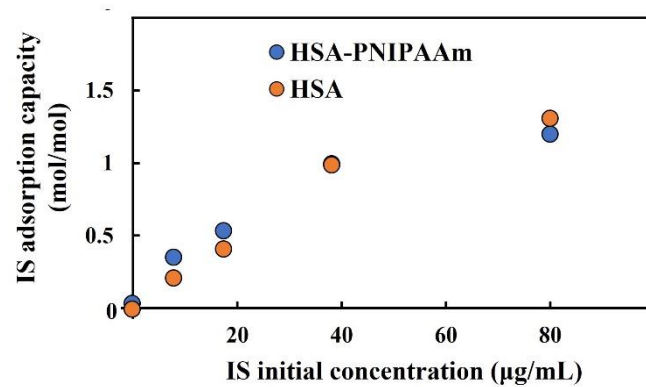


Figure S6. Adsorption isotherm of each sample.